

Wireless Controller and Base Station

WC-IP
WB-IP



Part No. A9009-0007
A9009-0008



Copyright © 2021

All rights reserved.

Original Instructions: English

All rights reserved throughout the world. No part of this publication may be stored in a retrieval system, transmitted, copied or reproduced in any way, including, but not limited to, photocopy, photograph, magnetic or other record without the prior agreement and permission in writing of the Videndum Plc.

Disclaimer

The information contained in this publication is believed to be correct at the time of printing. Videndum Production Solutions Ltd reserves the right to make changes to the information or specifications without obligation to notify any person of such revision or changes. Changes will be incorporated in new versions of the publication.

We are making every effort to ensure that our publications are updated on a regular basis to reflect changes to product specifications and features. Should this publication not contain information on the core functionality of your product, please let us know. You may be able to access the latest revision of this publication from our website.

Videndum Production Solutions Ltd reserves the right to make changes to product design and functionality without notification.

Trademarks

All product trademarks and registered trademarks are the property of The Videndum Plc.

All other trademarks and registered trademarks are the property of their respective companies.

Published by:

Videndum Production Solutions Ltd

Email: technical.publications@videndum.com

Safety	2	Routine Checks	12
Electrical Connection	2	Cleaning	12
Mounting and Installation	3	Charging	13
Water, Moisture and Dust	3	Technical Specification	14
Operating Environment	3	Wireless Controller	14
Maintenance	3	Base Station	15
Components and Connections	4	Troubleshooting	16
Wireless Controller	4	General Notices	18
Wireless Base Station	5		
Box Contents	6		
Wireless Controller	6		
Base Station	7		
Installation	8		
Powering Up	8		
Operation	9		
Maintenance	12		

Important information on the safe installation and operation of this product. Read this information before operating the product. For your personal safety, read these instructions. Do not operate the product if you do not understand how to use it safely. Save these instructions for future reference.

Warning Symbols Used in these Instructions

Safety cautions are included in these instructions. These safety instructions must be followed to avoid possible personal injury and avoid possible damage to the product.

Symboles d'avertissements utilisés dans ces instructions Des précautions de sécurité sont incluses dans ces instructions. Ces instructions de sécurité doivent être respectées pour éviter des blessures à la personne et des dommages au produit.



WARNING! Where there is a risk of personal injury or injury to others, comments appear supported by the warning triangle symbol. Where there is a risk of damage to the product, associated equipment, process or surroundings, comments appear supported by the word '**CAUTION**'.

AVERTISSEMENT ! Des avis accompagnés du symbole triangulaire d'avertissement sont en place lorsqu'un risque de blessure à la personne ou à autrui existe. Des avis accompagnés du mot « **PRUDENCE !** » sont en place lorsqu'il existe un risque de dommage au produit, à l'équipement associé, au processus ou à l'environnement.

Electrical Connection / Connexion électrique



WARNING! Always disconnect and isolate the product from the power supply before attempting any servicing or removing the covers.

AVERTISSEMENT ! Risque de décharge électrique. Débranchez et isolez toujours le produit de l'alimentation électrique avant toute procédure d'entretien ou le retrait des couvercles.



CAUTION! The products must be connected to a power supply of the same voltage (V) and current (A) as indicated on the product. Refer to the technical specifications for the products

PRUDENCE ! Ce produit doit être connecté à un approvisionnement en alimentation du même voltage (V) et courant (A) comme indiqué sur le produit. Consultez les spécifications techniques du produit



WARNING! The battery is a rechargeable type, it may only be replaced by a service centre. Risk of explosion if battery is replaced by an incorrect type. Dispose of used batteries according to the instructions

AVERTISSEMENT ! La batterie est de type rechargeable, elle ne peut être remplacée que par un centre de service. Risque d'explosion si la batterie est remplacée par un type incorrect. Mise au rebut des batteries conformément aux instructions

Mounting and Installation / Montage et installation



WARNING! Always ensure that all cables are routed so that they do not present any danger to personnel. Take care when routing cables in areas where robotic equipment is in use.

AVERTISSEMENT ! Vérifiez toujours que les câbles d'alimentation et de communication auxiliaires sont acheminés de manière à ne présenter aucun danger au personnel.

Soyez vigilant lorsque vous acheminez des câbles dans des endroits où de l'équipement robotique est utilisé.

Water, Moisture and Dust / Eau, humidité et poussière



WARNING! Protect the product from water, moisture and dust. The presence of electricity near water can be dangerous.

AVERTISSEMENT ! Protégez le produit contre l'eau, l'humidité et la poussière. La présence d'électricité à proximité de l'eau peut présenter des dangers.



WARNING! When using this product outside, protect from rain using a suitable waterproof cover.

AVERTISSEMENT ! Lorsque vous utilisez ce produit à l'extérieur, protégez-le de la pluie avec une protection imperméable adéquate.

Operating Environment / Environnement d'opération



CAUTION! The product should not be used outside the operating temperature limits. Refer to the product technical specifications for the operating limits for the product.

PRUDENCE ! Ce produit ne doit pas être utilisé hors ses limites de température de fonctionnement. Consultez les spécifications techniques du produit pour obtenir ses limites de fonctionnement.

Maintenance / Entretien

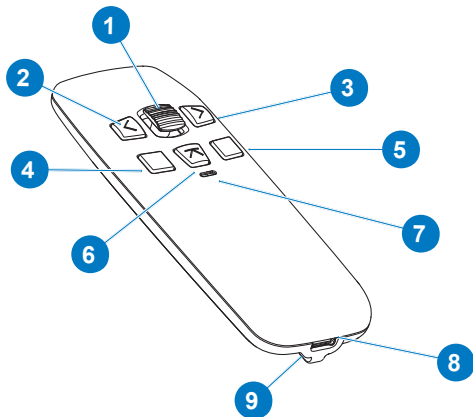


WARNING! Servicing or repair of this product must only be performed by qualified and trained engineers.

AVERTISSEMENT ! L'entretien ou la réparation de ce produit doit seulement être effectué par des techniciens qualifiés et dûment formés.

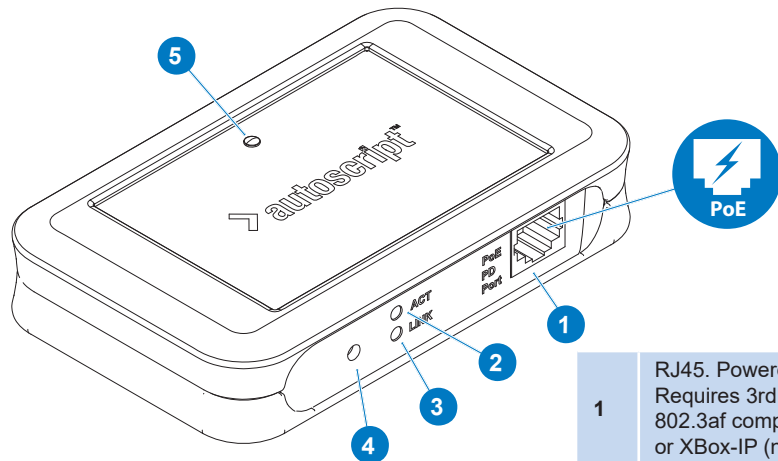
Components and Connections

Wireless Controller



1	Joystick (Scroll)
2	Previous Story Button
3	Next Story Button
4	Function 1 (Programmable)
5	Function 2 (Programmable)
6	Top Story Button
7	Status LED
8	USB-C Socket (Charging only)
9	Lanyard attachment

Wireless Base station

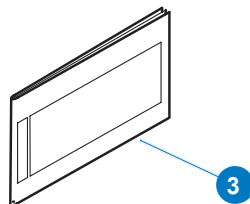
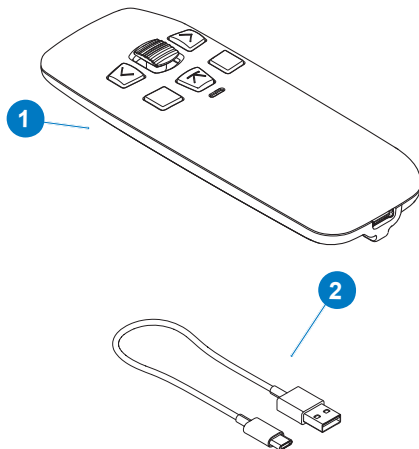


1	RJ45. Powered over Ethernet Requires 3rd party IEEE 802.3af compatible PoE injector or XBox-IP (not included)
2	Data LED
3	Link LED
4	Factory Reset
5	Status LED

Box Contents

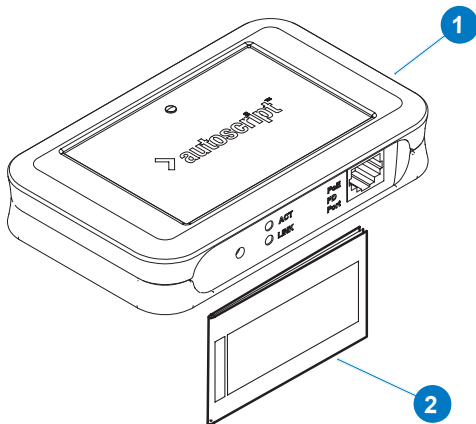
Wireless Controller

1	Wireless Controller
2	USB-C to USB-A Charging Cable
3	Information Sheet



Base Station

- | | |
|---|-----------------------|
| 1 | Wireless Base Station |
| 2 | Information Sheet |



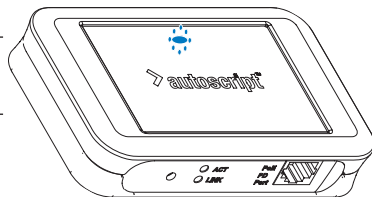
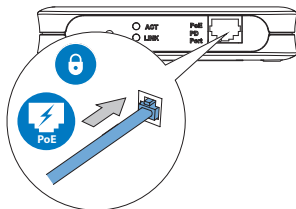
Installation

Powering Up WB-IP Wireless Base Station

The receiver is automatically powered up when the PoE Ethernet cable Cat5 or Cat6 cable is attached.



Requires 3rd party IEEE 802.3af compatible PoE injector or XBox-IP (A9009-0001 not included)



Status LED



Flashing Blue:

Powered but unconnected to WinPlus-IP



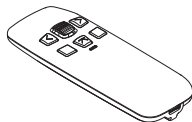
Solid Blue:







Connected to WinPlus-IP

WC-IP: Wireless Controller

Before first use follow the charging procedure on page 10 to fully charge the controller.

To power up, Hold down F1 (function 1) button for 2 secs.



Status LED	
	Solid Red: Live Controller
	Flashing Red: Low battery indicator
	Flashing Green: Charging (or partially charged). Will return to displaying Winplus-IP connectivity / live controller status upon pressing any button, to allow for use while charging. This will return to displaying charging status after 1hr of inactivity, or on change of state (fully charged)
	Solid Green: Fully charged (connected to charger or disconnected and %100 capacity). Will return to displaying WinPlus-IP connectivity / live controller status upon pressing any button, to allow for use while charging. This will return to displaying charging status after 1hr of inactivity
	Flashing Blue: Powered but unconnected to WinPlus-IP
	Solid Blue: Connected to WinPlus-IP
None:	Sleep

Operation

1. Make sure the WB-IP and WC-IP are both powered on. The status light on both devices will flash.
2. The WB-IP and WC-IP will pair in a range up to 100m/300ft (line of sight).
3. To pair the WB-IP with the WC-IP follow the instructions in **WP-IP software guide A9009-4983** to select the controller from within the software, the unique identifier (MAC address) will be required, it is located on the underside of the controller.
4. When paired the WB-IP status light will show solid blue.
5. When paired the WC-IP status light will show solid blue.

The WC-IP will perform the current functions as default:

- **Joystick:** Scroll through text, control speed of scroll.
 - **Button 2:** Press to skip to previous story.
 - **Button 3:** Press to skip to the next story.
 - **Button 4:** Function 1 (assignable in Winplus-IP).
 - **Button 5:** Function 2 (assignable in WinPlus-IP).
 - **Button 6:** Press to skip to the top story.
- (See Device Configuration / General tab of WC-IP in WP-IP software application for options).
- To unpair the WC-IP from the current WB-IP, press and hold the F1 button for 3 seconds
 - To put the WC-IP into a deep sleep (to save the battery), press and hold the F1 button for 5 seconds
 - The controller will automatically go to sleep after 3 minutes if disconnected, or 60 minutes if connected but no inputs are detected
 - To wake the WC-IP momentarily press any button except the F1

Sensitivity and dead band range can be adjusted. (See Device Configuration/Speed Profile tab of WC-IP in WinPlus-IP software application for options).

Recommended positioning:

- Ensure that the WB-IP has a clearance of 100mm around the side and top surface , so as to not adversely impact wireless performance.
- Ensure Status LED is visible for easy diagnosis.
- 100m / 300ft max line of sight; obstructions placed in path between WC-IP and WB-IP will reduce operating range.

Line of sight



300 ft (100 m)
Max. line of sight



Routine Maintenance

The WB-IP and WC-IP require minimal routine maintenance, apart from checking the connections and overall operation periodically.

Routine checks

During use, check the following:

- Check PoE Ethernet cable for signs of wear or damage. Replace as necessary.
- Check the PoE Ethernet cable is connected properly.

Cleaning

During normal use the only cleaning required should be a regular wipe over with a dry, lint-free cloth. Particular attention should be paid to the connection port.

Charging Battery

1. Connect the supplied USB cable to the wall charger (power adapter).
2. Plug the USB cable into the USB-C port on Controller
3. Plug the USB power adaptor into an electric socket and switch on the power supply.
4. Wait until controller is fully charged approximately 2.5 hours.

LED Status: Flashing RED = charge required, Flashing GREEN = charging, Solid GREEN = charged.



There are no user serviceable parts in the controller, when the battery no longer holds a charge the controller can be returned to Videndum Productions Solutions Service Centre for refurbishment or disposal. (See page 15) for safe and proper disposal.

Technical Specification

	A9009-0007 - WC-IP: Wireless Controller
Power	Integrated rechargeable Li-Po battery
Battery Life	100hrs (continuous use)
Charging time	2.5hrs (from 0 – 100% capacity)
Wireless Range	100m / 300ft
Operating Freq.	2.4GHz
Antenna	Integral
Scroll Input	Thumb operated joystick, vertical travel, centre-bias
Function Button	Previous Story, Next Story, Top of Rundown, Function 1 (programmable), and Function 2 (programmable)
Indicator	Single RGB LED (wireless connection, battery life, and charging status)
Connector	USB-C (charging only)
Weight	70g / 0.15lb
Dimensions	120 x 40 x 20 mm / 4.7 x 1.6 x 0.8"

	A9009-0008 WB-IP: Wireless Base station
Power	PoE, 802.3af
Wireless Range	100m / 300ft
Operating Freq.	2.4GHz
Antenna	Integral
Network	Ethernet, 100BaseT
Indicators	RGB Status LED (power and wireless connection status) Ethernet Data LED Ethernet Link LED
Connector	RJ45
Weight	150g / 0.3lb
Dimensions	25 x 73 x 116mm / 1 x 2.9 x 4.6"

Troubleshooting

Fault	Check
Wireless Controller	
The WC-IP is not powering up	Check that the controller has a charge (Solid Green Light)
The WC-IP is powered up, but not controlling the prompted text	Check that the WC-IP and WB-IP are paired (solid blue light in status window of WB-IP, Slow blinking blue light on WC-IP)
	Confirm that the WB-IP is enabled in the Devices window
	Check that a quality Cat5 or Cat6 cable has been used to connect the WB-IP to the PoE injector
	Check that the dead-band and scroll profile settings are appropriate within the WP-IP software application (WB-IP/Device Configuration/Speed Profile)
The WC-IP is powered up, but not paired with the WB-IP	Check that the WB-IP is within the range of the WC-IP (max 300 Feet)
	Check that the signal connection between the two devices is line of sight
	Check that another WC-IP is not paired with the WB-IP
	Check that the WB-IP is powered
The WC-IP is not charging	Check that the charging source provides a charge of 5v, 1A (minimum).
	Check that the cable being used to connect the WC-IP to the charging source is the cable supplied with the WC-IP.

Fault	Check
Wireless Basestation	
The WB-IP is not powering up	Check that the power over Ethernet source has a suitable power injector
	Check that the cable from the PoE source is firmly locked into the PoE input on the WB-IP
	Check that a quality Cat5 or Cat6 cable has been used to connect to the PoE injector
The WB-IP is powered up, but not controlling the prompted text	Check that any connections to the WB-IP are correct and secured Confirm that the WB-IP is enabled in the Devices window
	Check that a quality Cat5 or Cat6 cable has been used to connect the controller to the PoE injector
	Check that a quality Cat5 or Cat6 cable has been used to connect the controller to the PoE injector
The WB-IP is not discovered on a local IP network	Check that the WB-IP and the software application are not separated by an IP gateway
	Check that the device is not already connected to another different network
	If added to the system manually check the correct details are entered in the Manually Add Device fields
The WB-IP IP address is not configured correctly in the application	Check that the correct IP address has been added for the WB-IP (i.e. has this IP address been used for a different device)

General Notices

FCC Certification



FCC Warning

Changes or modifications not expressly approved by the party responsible for compliance could void the user's authority to operate the equipment.

FCC Declaration of Conformity

This product complies with Part 15 of the FCC Rules. Operation is subject to the following two conditions:

1. This product may not cause harmful interference.
2. This product must accept any interference received, including interference that may cause undesired operations.



Declaration of Conformity

Videndum Production Solutions Limited declares that this product has been manufactured in accordance with BS EN ISO 9001:2008.

This product complies with the following EU Directives:

- EMC Directive 2014/30/EU

Compliance with these directives implies conformity to applicable harmonised European standards (European Norms) which are listed on the EU Declaration of Conformity for this product or product family. A copy of the Declaration of Conformity is available upon request.

Environmental considerations



European Union Waste of Electrical and Electronic Equipment (WEEE) Directive (2012/19/EU)

This symbol marked on the product or its packaging indicates that this product must not be disposed of with general household waste. In some countries or European Community regions separate collection systems have been set up to handle the recycling of electrical and electronic waste products. By ensuring this product is disposed of correctly, you will help prevent potentially negative consequences for the environment and human health. The recycling of materials helps conserve natural resources.

Visit our website for information on how to safely dispose of this product and its packaging.

In countries outside the EU:

Dispose of this product at a collection point for the recycling of electrical and electronic equipment according to your local government regulations.

Disposal of Waste Batteries

Any batteries included with this product must not be treated as household waste. By ensuring these batteries are disposed of correctly, you will help prevent potentially negative consequences for the environment and human health, and help conserve natural resources.

Hand the battery over to the applicable collection point for recycling waste batteries or contact your local authority for information on a recycling facility in your area.

Publication No. A9009-4988/2



Autoscript
A Videndum plc Brand

www.autoscript.tv