

# User Guide



Wireless IP Hand Control and Receiver

## Wireless IP Hand Control and Receiver WHC-IP - WHC-REC



EN



Part No. A9009-0005  
A9009-0006

[www.autoscript.tv](http://www.autoscript.tv)



Copyright © 2018

All rights reserved.

## **Original Instructions: English**

All rights reserved throughout the world. No part of this publication may be stored in a retrieval system, transmitted, copied or reproduced in any way, including, but not limited to, photocopy, photograph, magnetic or other record without the prior agreement and permission in writing of the Vitec Group Plc.

## **Disclaimer**

The information contained in this publication is believed to be correct at the time of printing. Vitec Production Solutions Ltd reserves the right to make changes to the information or specifications without obligation to notify any person of such revision or changes. Changes will be incorporated in new versions of the publication.

We are making every effort to ensure that our publications are updated on a regular basis to reflect changes to product specifications and features. Should this publication not contain information on the core functionality of your product, please let us know. You may be able to access the latest revision of this publication from our website.

Vitec Production Solutions Ltd reserves the right to make changes to product design and functionality without notification.

## **Trademarks**

All product trademarks and registered trademarks are the property of The Vitec Group Plc.

All other trademarks and registered trademarks are the property of their respective companies.

## **Published by:**

Vitec Production Solutions Ltd

Email: [technical.publications@vitecgroup.com](mailto:technical.publications@vitecgroup.com)



<b>Safety</b> .....	<b>2</b>	Maintenance .....	10
Electrical Connection .....	2	Routine checks .....	10
Mounting and Installation .....	3	Cleaning .....	10
Water, Moisture and Dust .....	3	<b>Technical Specification</b> .....	<b>11</b>
Operating Environment .....	3	<b>Troubleshooting</b> .....	<b>12</b>
Maintenance .....	3	<b>General Notices</b> .....	<b>14</b>
<b>Components and Connections</b> .....	<b>4</b>		
Wireless IP Hand Control Receiver .....	4		
Wireless IP Hand Control .....	5		
Box Contents .....	6		
<b>Installation</b> .....	<b>7</b>		
Powering Up .....	7		
<b>Operation</b> .....	<b>8</b>		



## Safety

**Important information on the safe installation and operation of this product. Read this information before operating the product. For your personal safety, read these instructions. Do not operate the product if you do not understand how to use it safely. Save these instructions for future reference.**

### Warning Symbols Used in these Instructions

Safety cautions are included in these instructions. These safety instructions must be followed to avoid possible personal injury and avoid possible damage to the product.



**WARNING!** Where there is a risk of personal injury or injury to others, comments appear supported by the warning triangle symbol. Where there is a risk of damage to the product, associated equipment, process or surroundings, comments appear supported by the word '**CAUTION**'.

### Electrical Connection



**WARNING!** Always disconnect and isolate the product from the power supply before attempting any servicing or removing the covers.



**CAUTION!** The products must be connected to a power supply of the same voltage (V) and current (A) as indicated on the product. Refer to the technical specifications for the products



## Mounting and Installation



**WARNING!** Always ensure that all cables are routed so that they do not present any danger to personnel. Take care when routing cables in areas where robotic equipment is in use.

### Water, Moisture and Dust



**WARNING!** Protect the product from water, moisture and dust. The presence of electricity near water can be dangerous.



**WARNING!** When using this product outside, protect from rain using a suitable waterproof cover.

### Operating Environment



**CAUTION!** The product should not be used outside the operating temperature limits. Refer to the product technical specifications for the operating limits for the product.

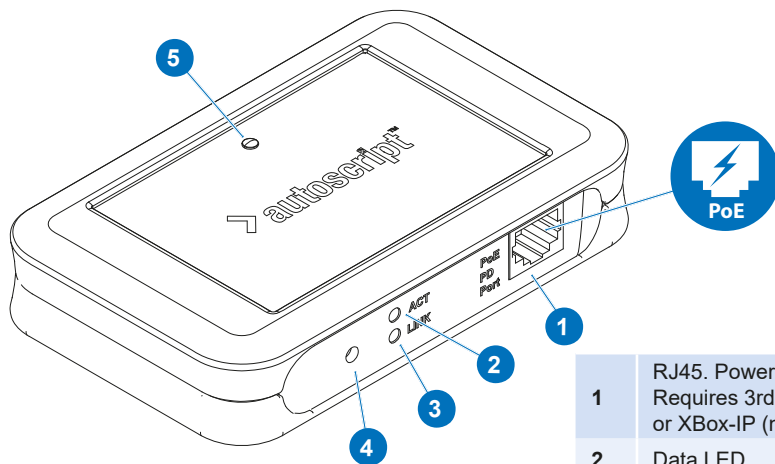
### Maintenance



**WARNING!** Servicing or repair of this product must only be performed by qualified and trained engineers.

## Components and Connections

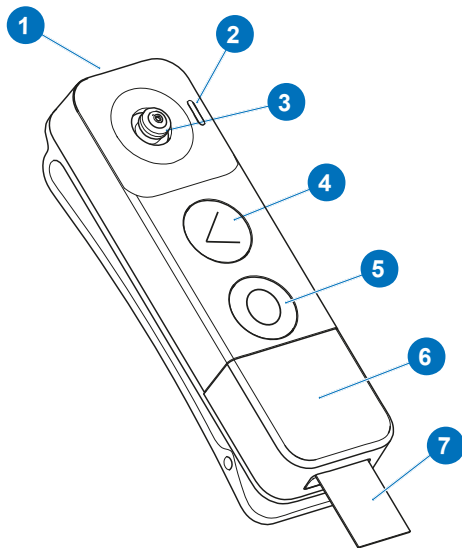
### A9009-0006 Wireless IP Hand Control Receiver



1	RJ45. Powered over Ethernet Requires 3rd party PoE injector or XBox-IP (not included)
2	Data LED
3	Link LED
4	Factory Reset
5	Status LED



### A9009-0005 Wireless IP Hand Control

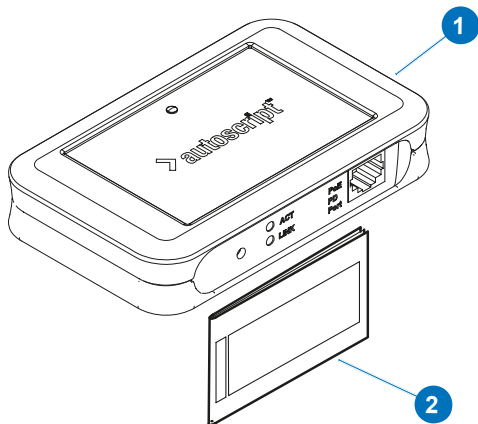


1	Power / Sleep Button
2	Status LED
3	Joystick
4	Button 1
5	Button 2
6	Battery Cover
7	Battery Saver Tab



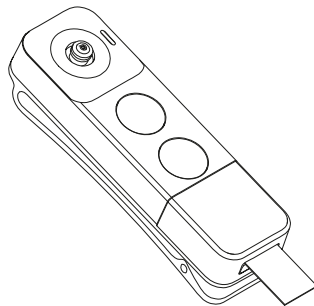
## Components and Connections

### Box Contents A9009-0006



1	WHC-REC A9009-0006
2	Quick Start Guide

### Box Contents A9009-0005



1	WHC-IP A9009-0005
---	-------------------

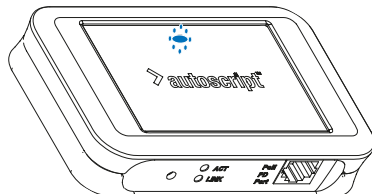
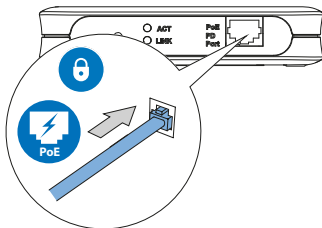


## Powering Up A9009-0006

The receiver is automatically powered up when the PoE Ethernet cable Cat5 or Cat6 cable is attached.



Requires 3rd party PoE injector or XBox-IP (A9009-0001 not included)



### Status LED



**Flashing Blue: Powered and in pairing mode**

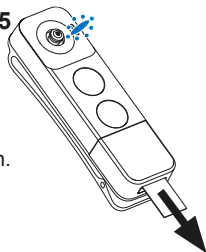


**Solid Blue: Powered and paired with WHC-IP**

## Powering Up A9009-0005

For first use, pull out the battery saver tab from the battery cover.

Press any button to switch on.  
(Replacement batteries 3V CR1620)



### Status LED



**Rapid Flashing Blue: Powered and Pairing with WHC-REC**



**Slow Flashing Blue: Powered and Paired with WHC-REC**



## Operation

1. Make sure the WHC-REC and WHC-IP are both powered on. The status light on both devices will flash.
2. The WHC-REC and WHC-IP will pair in a range of up to 30 Feet in line of sight.
3. To pair the WHC-IP with the WHC-REC press and hold button 2 (O)
4. When paired the WHC-REC status light will show solid blue.
5. When paired the WHC-IP status light will flash slowly.

The WHC-IP will perform the current functions as default:

- **Button 1:** Short press: previous marker
- **Button 1:** Long Press: programmable function

(See Device Configuration/General tab of WHC-REC in WP-IP software application for options).

- **Button 2:** Short Press: next marker
- **Button 2:** Long press: enter pairing mode

To put the WHC-IP into sleep mode press and hold the button on the top of the device for 2 seconds.

### Notes:

The WHC-REC can only be paired and active with one WHC-IP at any one time.

Where more than one WHC-IP are available putting the connected WHC-IP into sleep mode will then enable a different WHC-IP to pair with the WHC-REC.

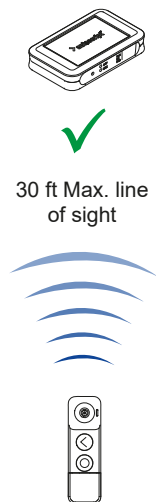
Similarly, when more than one WHC-REC are used, if a connection is lost to one WHC-IP and a second WHC-REC is in range it will automatically pair with the available WHC-IP (if it has been previously paired with that WHC-REC)

Sensitivity and dead band range can be adjusted. (See Device Configuration/Speed Profile tab of WHC-REC in WP-IP software application for options).

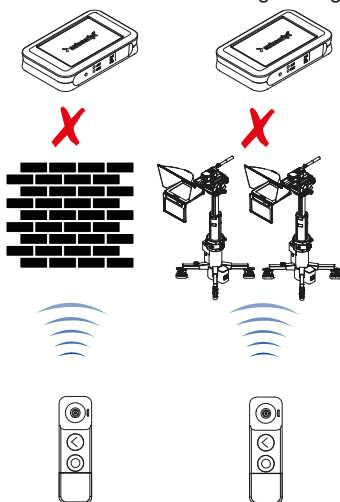


## Recommended positioning:

### Line of sight

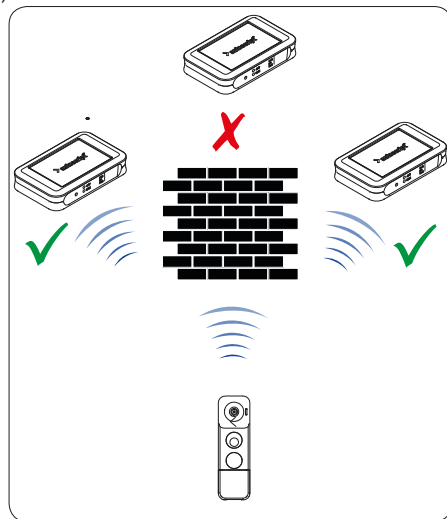


**Maximum range 30 Feet.**  
(Obstructions will reduce the signal range)



## Multiple receivers

Use multiple receivers as shown below to help eliminate areas where the signal is low.





## Maintenance

### Routine Maintenance

The WHC-IP and WHC-REC require minimal routine maintenance, apart from checking the connections and overall operation periodically.

### Routine checks

During use, check the following:

- Check PoE Ethernet cable for signs of wear or damage. Replace as necessary.
- Check the PoE Ethernet cable is connected properly.
- Check the Buttons all move freely.

### Cleaning

During normal use the only cleaning required should be a regular wipe over with a dry, lint-free cloth. Dirt accumulated during storage or periods of disuse may be removed with a vacuum cleaner. Particular attention should be paid to the connection port.



**WARNING!** Disconnect and isolate the product from the power supply before cleaning.

---



	WHC-IP (A9009-0005)
<b>Function Button Operations (Assignable in WinPlus-IP)</b>	Previous Marker, Next Marker, Top of Run Order, Prompt On / Off, Blank Screen. <b>Note!</b> Addition functions will be added in subsequent WP-IP releases
<b>Status Display</b>	Illuminated Wireless Connection / Pairing
<b>Power</b>	2 x CR1620 3V lithium Coin Cell Batteries (Included)
<b>Weight</b>	45g / 0.1lb
<b>Dimensions</b>	15 x 12 x 65mm / 0.6 x 0.8 x 2.6"

	WHC-REC (A9009-0006)
<b>Status Display</b>	Illuminated Power / Connection State
<b>Power</b>	RJ45. Powered over Ethernet Requires 3rd party PoE injector or XBox-IP (not included)
<b>Power Consumption</b>	3W Max.
<b>Weight</b>	250g / 0.5lb
<b>Dimensions</b>	25 x 73 x 116mm / 1 x 2.9 x 4.6"
<b>Connector</b>	1 x RJ45

## Troubleshooting

Fault	Check
<b>WHC-REC</b>	
<b>The WHC-REC is not powering up</b>	Check that the power over Ethernet source has a suitable power injector
	Check that the cable from the PoE source is firmly locked into the PoE input on the WHC-REC
	Check that a quality Cat5 or Cat6 cable has been used to connect to the PoE injector
<b>The WHC-REC is powered up, but not controlling the prompted text</b>	Check that any connections to the WHC-REC are correct and secured Confirm that the WHC-REC is enabled in the Devices window
	Check that a quality Cat5 or Cat6 cable has been used to connect the controller to the PoE injector
	Check that a quality Cat5 or Cat6 cable has been used to connect the controller to the PoE injector
<b>The WHC-REC is not discovered on a local IP network</b>	Check that the WHC-REC and the software application are not separated by an IP gateway
	Check that the device is not already connected to another different network
	If added to the system manually check the correct details are entered in the Manually Add Device fields
<b>The WHC-REC IP address is not configured correctly in the application</b>	Check that the correct IP address has been added for the WHC-REC (i.e. has this IP address been used for a different device)



Fault	Check
<b>WHC-IP</b>	
<b>The WHC-IP is not powering up</b>	<p>Check that the correct batteries have been used (CR1620 3V)</p> <p>Check the batteries are fitted correctly</p> <p>Replace the batteries (average battery life is 9hrs constant use)</p> <p>Check that the battery saver has been removed completely</p> <p>Check that the WHC-IP is not in sleep mode by pressing any button on the device</p>
<b>The WHC-IP is powered up, but not controlling the prompted text</b>	<p>Check that the WHC-IP and WHC-REC are paired (solid blue light in status window of WSC-REC, Slow blinking blue light on WSC-IP)</p> <p>Confirm that the WHC-REC is enabled in the Devices window</p> <p>Check that a quality Cat5 or Cat6 cable has been used to connect the WSC-REC to the PoE injector</p> <p>Check that the deadband and scroll profile settings are appropriate within the WP-IP application (WHC-REC/Device Configuration/Speed Profile)</p>
<b>The WHC-IP is powered up, but not paired with the WHC-REC</b>	<p>Check that the WHC-REC is within the range of the WHC-IP (max 30 Feet)</p> <p>Check that the signal connection between the two devices is line of sight</p> <p>Check that another WHC-IP is not paired with the WHC-REC</p> <p>Check that the WSC-REC is powered</p>



## General Notices

### FCC Certification



### FCC Warning

Changes or modifications not expressly approved by the party responsible for compliance could void the user's authority to operate the equipment.

### FCC Declaration of Conformity

This product complies with Part 15 of the FCC Rules. Operation is subject to the following two conditions:

1. This product may not cause harmful interference.
2. This product must accept any interference received, including interference that may cause undesired operations.



### Declaration of Conformity



Vitec Production Solutions Limited declares that this product has been manufactured in accordance with BS EN ISO 9001:2008.

This product complies with the following EU Directives:

- Low Voltage Directive 2014/35/EU
- EMC Directive 2014/30/EU

Compliance with these directives implies conformity to applicable harmonised European standards (European Norms) which are listed on the EU Declaration of Conformity for this product or product family. A copy of the Declaration of Conformity is available upon request.

### Environmental considerations



#### European Union Waste of Electrical and Electronic Equipment (WEEE) Directive (2012/19/EU)

This symbol marked on the product or its packaging indicates that this product must not be disposed of with general household waste. In some countries or European Community regions separate collection systems have been set up to handle the recycling of electrical and electronic waste products. By ensuring this product is disposed of correctly, you will help prevent potentially negative consequences for the environment and human health. The recycling of materials helps conserve natural resources.

Visit our website for information on how to safely dispose of this product and its packaging.

#### In countries outside the EU:

Dispose of this product at a collection point for the recycling of electrical and electronic equipment according to your local government regulations.





Publication No. A9009-4984/0



**Autoscript**  
A Vitec Group Brand

[www.autoscript.tv](http://www.autoscript.tv)