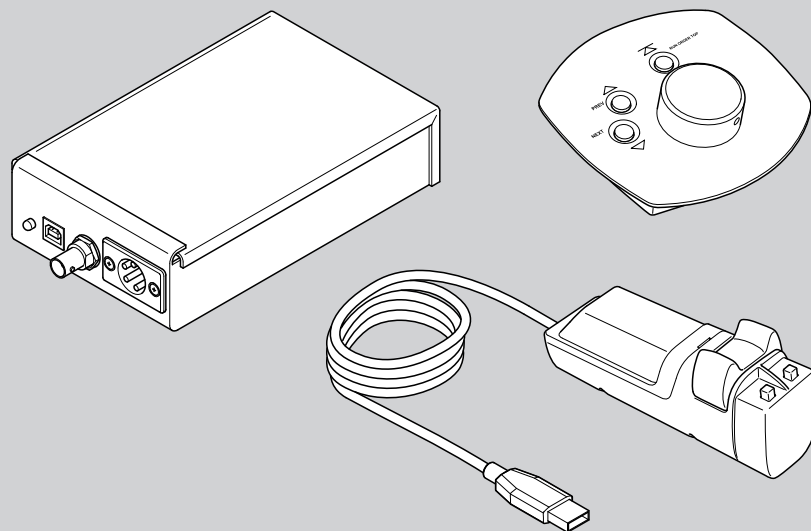


Xbox Lite

Field and Studio
Prompting System



Part Nos. XBOXLITE
HC-5
HC-7

Copyright © 2014

All rights reserved.

Original Instructions: English

All rights reserved throughout the world. No part of this document may be stored in a retrieval system, transmitted, copied or reproduced in any way, including, but not limited to, photocopy, photograph, magnetic or other record without the prior agreement and permission in writing of the Vitec Group plc.

Disclaimer

The information contained in this manual is believed to be correct at the time of printing. Vitec Videocom Ltd reserves the right to make changes to the information or specifications without obligation to notify any person of such revision or changes. Changes will be incorporated in new versions of the publication.

We are making every effort to ensure that our manuals are updated on a regular basis to reflect changes to product specifications and features. Should this manual not contain information on the core functionality of your product, please let us know. You may be able to access the latest revision of this manual from our website.

Vitec Videocom Ltd reserves the right to make changes to product design and functionality without notification.

Trademarks

All product trademarks and registered trademarks are the property of The Vitec Group Plc.

All other trademarks and registered trademarks are the property of their respective companies.

Published by:

Vitec Videocom Ltd
Supports Technical Publications Department
Western Way, Bury St Edmunds
Suffolk IP33 3TB
United Kingdom
Email: technical.publications@vitecgroup.com

Safety	2
About this Guide	3
Components and Connections	4
XBOXLITE	4
HC-5 Desktop Controller	4
HC-7 Hand Controller	5
WP-XLITE Package - Box Contents	5
Installation	6
Connecting and Installing on a Host PC	6
Video Connection	9
XBox System Connections - Typical Installation	10
Maintenance	11
Troubleshooting	12
Technical Specification	13
General Notices	14

Safety

Important information on the safe installation and operation of this product. Read this information before operating the product. For your personal safety, read these instructions. Do not operate the product if you do not understand how to use it safely. Save these instructions for future reference.

Warning Symbols Used in these Instructions

Safety cautions are included in these instructions. These safety instructions must be followed to avoid possible personal injury and avoid possible damage to the product.



WARNING!

Where there is a risk of personal injury or injury to others, comments appear supported by the warning triangle symbol. Where there is a risk of damage to the product, associated equipment, process or surroundings, comments appear supported by the word 'Caution'.



ELECTRIC SHOCK

Where there is a risk of electric shock, comments appear supported by the hazardous voltage warning triangle.

Intended Use

The Xbox Lite and associated products have been designed to provide a prompting text display and control system as part of a high quality teleprompting facility for television broadcasting.

The Xbox Lite system is intended for use by television presenters and camera operators, installed within a television studio environment, or on outside broadcasts (OB) when protected from weather by a suitable waterproof cover.

Electrical Connection



WARNING! Risk of electric shock. Always check cables for signs of damage. Damaged cables can cause personal injury and/or damage the equipment.



CAUTION! The products must be connected to a power supply of the same voltage (V) and current (A) as indicated on the products. Refer to the technical specifications for the products.



CAUTION! Only use the power cable specified for the products and certified for the country of use.



CAUTION! Using alternative power sources will invalidate the system EMC liability.

Mounting and Installation



WARNING! Always ensure that all power and auxiliary communications cables are routed so that they do not present any danger to personnel. Take care when routing cables in areas where robotic equipment is in use.

Water, Moisture and Dust



WARNING! Protect the product from water, moisture and dust. The presence of electricity near water can be dangerous.



WARNING! When using this product outside, protect from rain using a suitable waterproof cover.

Ventilation



WARNING! Slots and openings are intended for ventilation purposes to ensure reliable operation of the product, and protect it from overheating. Do not block or cover any slots and openings.

Operating Environment



CAUTION! The product should not be used outside the operating temperature limits. Refer to the product technical specifications for the operating limits for the product.

Cleaning



WARNING! Risk of electric shock. Always disconnect and isolate the product from the power supply before cleaning.



CAUTION! Do not use solvent or oil-based cleaners, abrasives or wire brushes.

Maintenance



WARNING! Servicing or repair of this product must only be performed by qualified and trained electrical engineers.



WARNING! The fitting of non-approved parts and accessories, or the carrying out of non-approved alterations or servicing can be dangerous and could affect the safety of the product. It may also invalidate the terms and conditions of the product warranty.

About this Guide

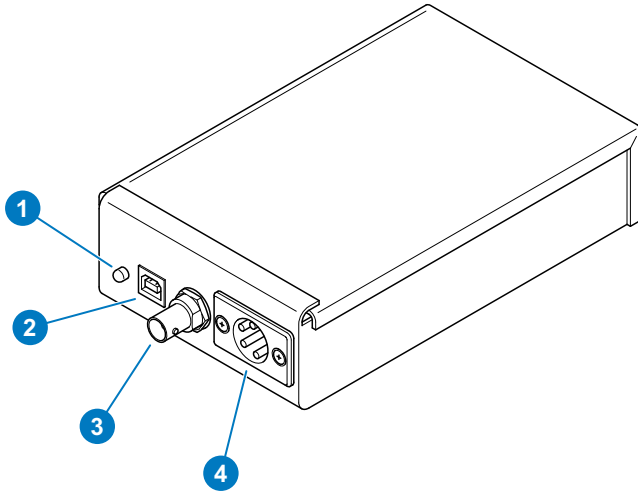
This guide describes the installation of the Xbox Lite and associated products as part of a full prompting system, using the range of compatible equipment and connecting cables available for various configurations.

The Xbox Lite prompting system consists of the following main products:

Part No.	Description
XBOXLITE	XBox Lite hardware interface for WinPlus-Xlite
HC-5	USB 3 button desktop controller
HC-7	USB 2 button hand speed scroll controller

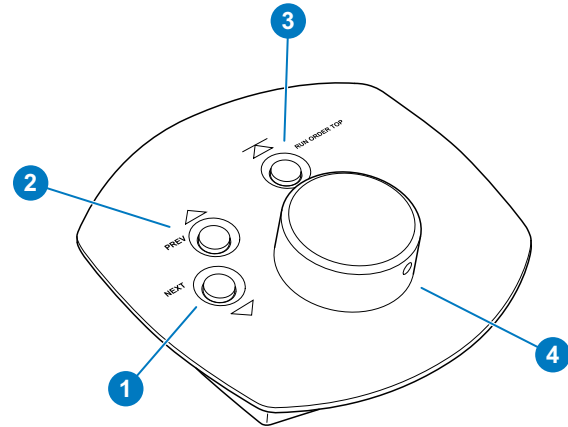
Components and Connections

XBOXLITE



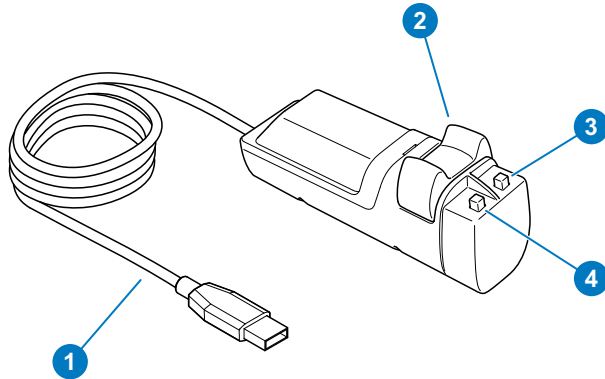
- | | |
|---|---------------------|
| 1 | Power indicator LED |
| 2 | USB socket |
| 3 | Video out socket |
| 4 | DC power in socket |

HC-5 Desktop Controller



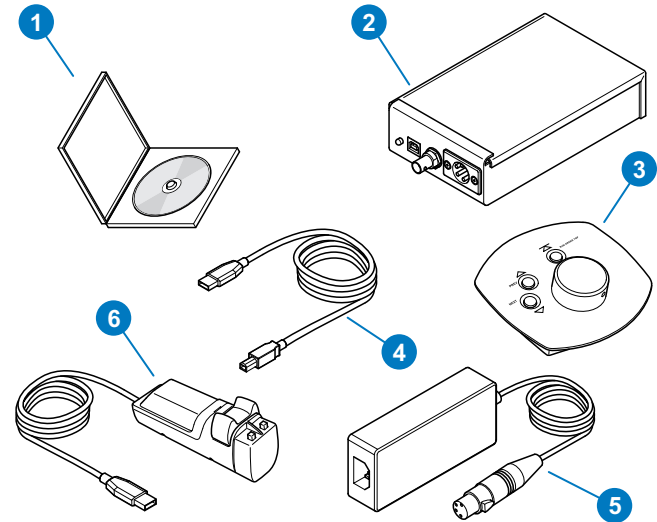
- | | |
|---|--------------------------------|
| 1 | 'Next story' button |
| 2 | 'Previous story' button |
| 3 | 'Back to top of script' button |
| 4 | Scroll speed rotary dial |

HC-7 Hand Controller



1	Hard-wired USB connecting cable
2	Scroll speed thumb control
3	'Next story' button
4	'Previous story' button

WP-XLITE Package - Box Contents



No.	Part	Description
1	A5000-5937	WinPlus Xlite software CD
2	XBOXLITE	XBox Lite hardware interface
3	HC-5	Desk controller
4	USB-C	USB connecting cable, x2
5	PSU-XLR	12V DC power supply
6	HC-7	Hand controller (optional accessory)

Installation

Connecting and Installing on a Host PC

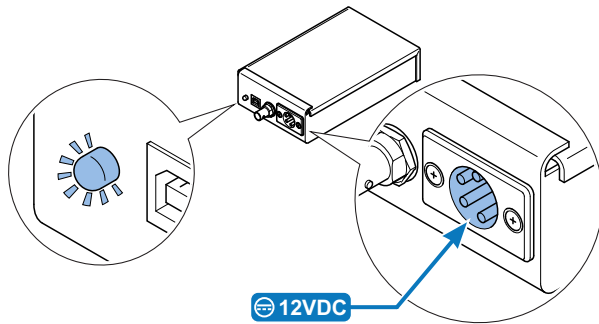
The Xbox Lite and associated controllers are connected by USB to the host PC running WinPlus Lite. They must be installed as USB hardware to function.

Before installing any hardware on the host PC, run the setup program **ualXXXX.exe** from the supplied CD. Alternatively, click on the **X-lite install** button on the CD front page. The default install path is:

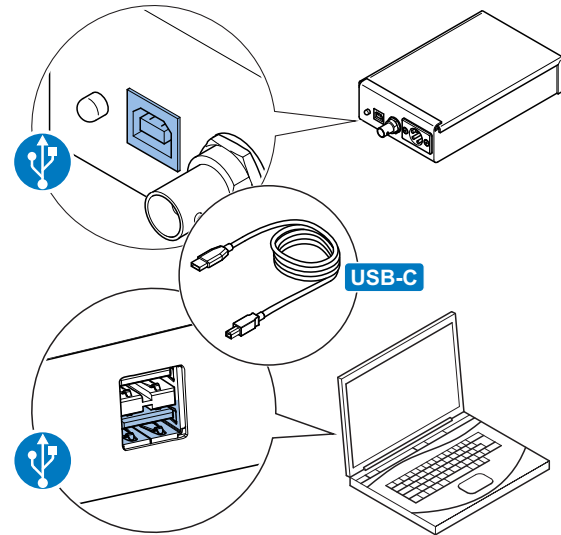
32 Bit O/S	C:\Program Files\Pciwplus32XL\Autoscript Device Drivers
64 Bit O/S	C:\Program Files (x86)\Pciwplus32XL\Autoscript Device Drivers

Installing the Xbox Lite

1. Connect a 12V DC power source to the Xbox Lite, typically using the XLR power supply provided. Alternatively a suitable battery source can be used on outside broadcasts. When power is present the LED indicator is illuminated.



2. Using the USB cable provided, connect the Xbox Lite to the host PC running WinPlus.



3. The computer will detect the Xbox Lite and start the "add new hardware" routine.
4. Click to select manual install and browse to **C:\Program Files\Pciwplus32XL\Autoscript Device Drivers** for 32 Bit O/S or **C:\Program Files (x86)\Pciwplus32XL\Autoscript Device Drivers** for 64 Bit O/S.
5. Windows XP reports a warning that the drivers are not approved by Microsoft - press **Continue**.

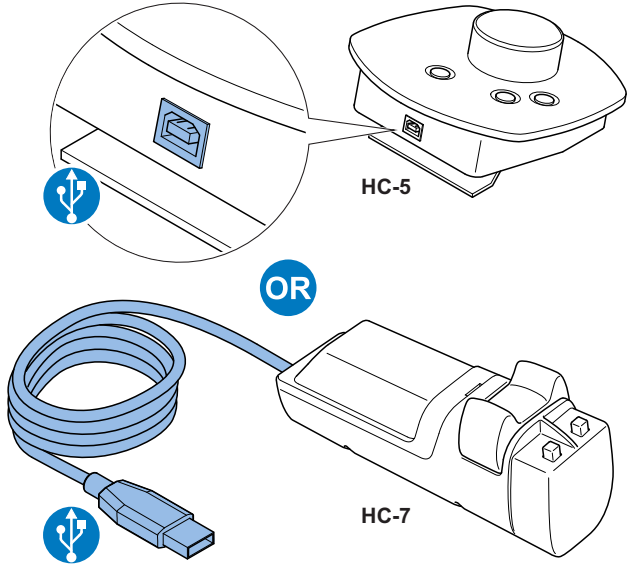
Installing the Desktop or Hand Controller

The following procedure applies to both the HC-5 desktop and HC-7 hand controllers. Select the appropriate driver for the controller being installed.

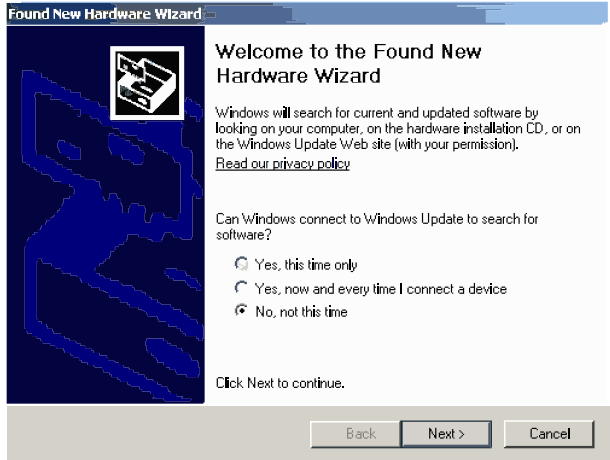


Only one USB controller (desktop or hand) can be connected and operated at a time.

1. Connect the HC-5 or HC-7 to the host PC running WinPlus.



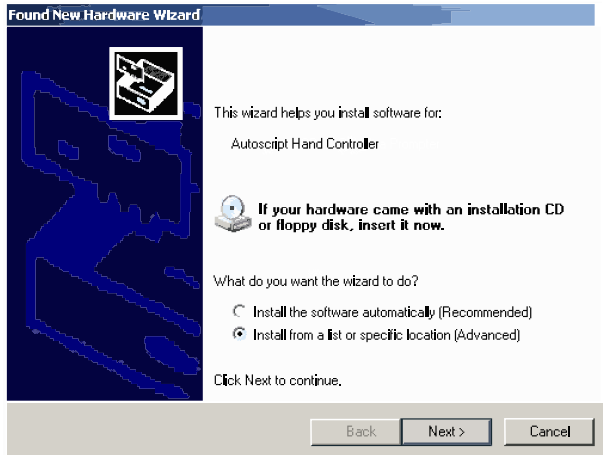
2. The host PC will detect the controller and launch the “Found New Hardware Wizard”.



3. The Wizard will prompt to connect to Windows Update to find the appropriate software for the XBox:
 - a) Click to select **No, not this time**.
 - b) Click the **Next** button to continue.

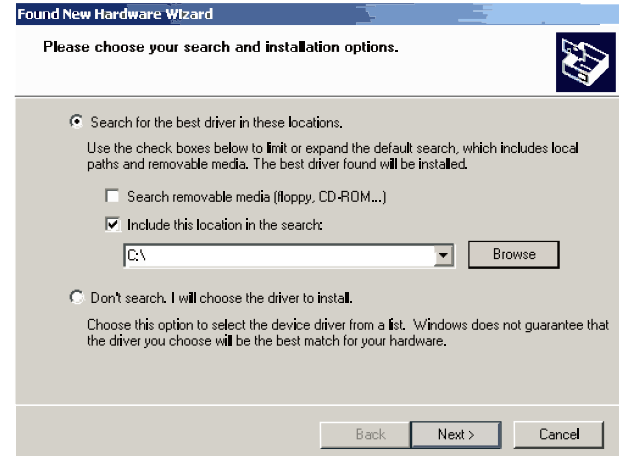
Installation

- In the next window click to select **Install from a list or specific location (Advanced)**.



- Click the **Next** button to continue.

- In the search and installation options window:
 - Click to unselect **Search removable media**.
 - Click to select **Include this location in the search**.
 - Click the **Browse** button.



- Browse to **C:\Program Files\Pciwplus32XL\Autoscrypt Device Drivers** for 32 Bit O/S or **C:\Program Files (x86)\Pciwplus32XL\Autoscrypt Device Drivers** for 64 Bit O/S.
- Click **OK**.

9. The Wizard will now copy and install the driver files.



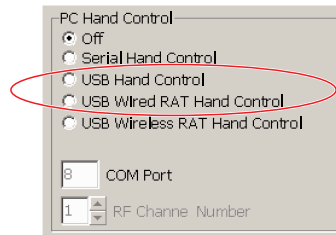
IMPORTANT! Windows will go through the Wizard process twice - one time to install the USB hand control driver and a second time to install the serial to USB adapter (software only).

10. Click the **Finish** button to exit the Wizard.

11. From the main menu in the WinPlus software, click to select **Options > Configuration**.

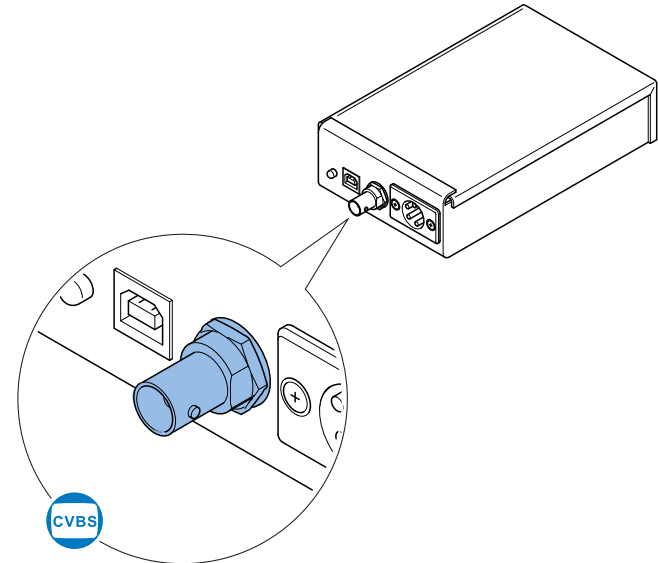
12. In the **Configuration** window click to select the **PC-Card** tab.

13. In the **PC Hand Control** field select the appropriate controller for use.



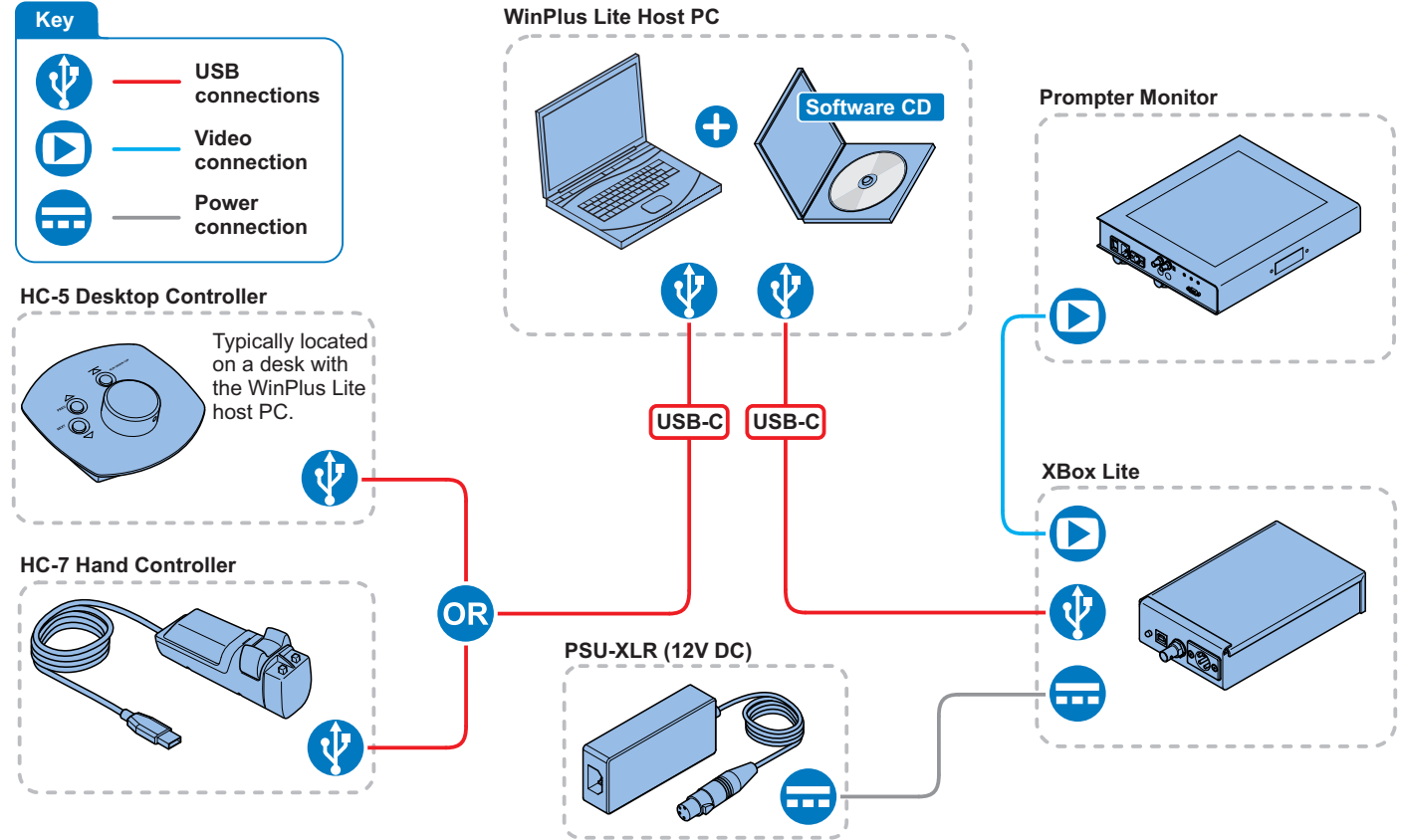
Video Connection

A standard composite video output is provided for connection to a prompter monitor.



Installation

XBox System Connections - Typical Installation



Routine Maintenance

The Xbox Lite requires minimal routine maintenance, apart from checking the connections and overall operation periodically.

Routine checks

During use, check the following:

- Check cables for signs of wear or damage. Replace as necessary.
- Check that all cables are connected properly.

Cleaning



WARNING! Risk of electric shock. Disconnect and isolate the product from the power supply before cleaning.

During normal use the only cleaning required should be a regular wipe over with a dry, lint-free cloth. Dirt accumulated during storage or periods of disuse may be removed with a vacuum cleaner. Particular attention should be paid to all connection ports on the Xbox Lite.

Troubleshooting

Fault	Check	Comments
The Xbox Lite is not powering up.	Check that the DC power source is connected and secured.	See the section Installing the Xbox Lite on page 6.
The Xbox Lite is powered up, but not controlling the prompted text.	Check that any USB connections to controllers are correct and secured.	See the section Installing the Xbox Lite on page 6.
The prompter monitor is not displaying text.	Check that the video connection is correct and secured.	See the section Video Connection on page 9.
	Ensure that quality screened cable has been used for the video signal and that the screen is earthed at both ends.	

Physical Data*

	XBox Lite	Desktop Controller	Hand Controller
Width*	97 mm (3.8 in)	133 mm (5.2 in)	30 mm (1.2 in)
Length*	138 mm (5.4in)	124 mm (4.9 in)	110 mm (4.3 in)
Height*	40 mm (1.6 in)	53 mm (2.1 in)	45 mm (1.8 in)
Weight	0.24 kg (0.53 lb)	0.6 kg (1.32 lb)	0.15 kg (0.33 lb)

*Excluding controls and connectors.

Environmental Data

Operating temperature range +5°C to +40°C (+41°F to +104°F)

Storage temperature range -20°C to +60°C (-4°F to +140°F)

Electrical Data

DC power input 12V DC

DC power consumption 100 mA

Connections Data

DC Power In Socket

Connector type: 4 pin XLR plug.

Pin	Signal
1	GROUND
4	+12V DC

Composite Video Connection

Connector type: BNC Connector.

Pin	Signal
Tip	Video
Sleeve	Ground

USB Connection

Conforms to USB 2.0 standard.

Technical specifications are subject to change without notice.

General Notices

FCC Certification



FCC Notice

This product complies with the limits for a Class A digital device, pursuant to Part 15 of the FCC Rules. These limits are designed to provide reasonable protection against harmful interference in a commercial environment. This equipment generates, uses and can radiate radio frequency energy and, if not installed and used in accordance with the instructions, may cause harmful interference with radio communications. Operation of this product in a residential area is likely to cause harmful interference, in which case you will be required to correct the interference at your own expense.

FCC Warning

Changes or modifications not expressly approved by the party responsible for compliance could void the user's authority to operate the equipment.

FCC Declaration of Conformity

This product complies with Part 15 of the FCC Rules. Operation is subject to the following two conditions:

1. This product may not cause harmful interference.
2. This product must accept any interference received, including interference that may cause undesired operations.

Declaration of Conformity



Vitec Videocom Limited declares that this product has been manufactured in accordance with BS EN ISO 9001:2008.

This product complies with the following EU Directives:

- Low Voltage Directive 2006/95/EC
- EMC Directive 2004/108/EC

Compliance with these directives implies conformity to applicable harmonized European standards (European Norms) which are listed on the EU Declaration of Conformity for this product or product family. A copy of the Declaration of Conformity is available upon request.

Environmental considerations

ROHS Compliance Statement

Vitec Videocom Limited is compliant with the European Union Directive 2002/95/EC Restrictions of Hazardous Substances (RoHS) that restricts the use of hazardous substances in Electrical and Electronic Equipment.

European Union Waste of Electrical and Electronic Equipment (WEEE) Directive (2002/96/EC)



This symbol marked on the product or its packaging indicates that this product must not be disposed of with general household waste. In some countries or European Community regions separate collection systems have been set up to handle the recycling of electrical and electronic waste products. By ensuring this product is disposed of correctly, you will help prevent potentially negative consequences for the environment and human health. The recycling of materials helps conserve natural resources.

Visit our website for information on how to safely dispose of this product and its packaging.

In countries outside the EU:

Dispose of this product at a collection point for the recycling of electrical and electronic equipment according to your local government regulations.

Pollution statement

This equipment is designed for operation in Pollution Degree 2 environments.



Publication part No. XBOXLITE-4980/1