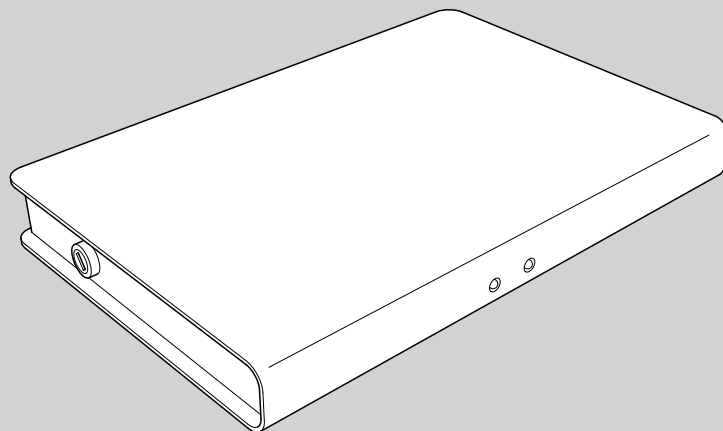


X-Box Ultra USB Prompter Device



Part Nos. WP-NXU
WP-NXU-SDI
WP-SXU
WP-SXU-SDI

Copyright © 2014

All rights reserved.

Original Instructions: English

All rights reserved throughout the world. No part of this document may be stored in a retrieval system, transmitted, copied or reproduced in any way, including, but not limited to, photocopy, photograph, magnetic or other record without the prior agreement and permission in writing of the Vitec Group plc.

Disclaimer

The information contained in this manual is believed to be correct at the time of printing. Vitec Videocom Ltd reserves the right to make changes to the information or specifications without obligation to notify any person of such revision or changes. Changes will be incorporated in new versions of the publication.

We are making every effort to ensure that our manuals are updated on a regular basis to reflect changes to product specifications and features. Should this manual not contain information on the core functionality of your product, please let us know. You may be able to access the latest revision of this manual from our website.

Vitec Videocom Ltd reserves the right to make changes to product design and functionality without notification.

Trademarks

All product trademarks and registered trademarks are the property of The Vitec Group Plc.

All other trademarks and registered trademarks are the property of their respective companies.

Published by:

Vitec Videocom Ltd
Supports Technical Publications Department
Western Way, Bury St Edmunds
Suffolk IP33 3TB
United Kingdom
Email: technical.publications@vitecgroup.com

Safety	2
About this Guide	3
Components and Connections	4
Box Contents - All Variants	5
Installation	6
X-Box Ultra Data and Video Connections	6
Genlock or Control Net Connections	6
Serial Connection	7
Video Connections - X-Box Ultra	7
Video Connections - X-Box Ultra SDI	7
X-Box Ultra Power Connections	8
AC Power In Connection	8
DC Power In Connection	8
DC Power Out Connection	8
X-Box Ultra System Connections - Typical Installation	9
Connecting and Installing on a Host PC	10
Connecting and Powering the X-Box Ultra	10
X-Box Ultra Setup and Registration for WinPlus	13
Maintenance	15
Troubleshooting	16
Technical Specification	17
General Notices	18

Safety

Important information on the safe installation and operation of this product. Read this information before operating the product. For your personal safety, read these instructions. Do not operate the product if you do not understand how to use it safely. Save these instructions for future reference.

Warning Symbols Used in these Instructions

Safety cautions are included in these instructions. These safety instructions must be followed to avoid possible personal injury and avoid possible damage to the product.



WARNING!

Where there is a risk of personal injury or injury to others, comments appear supported by the warning triangle symbol. Where there is a risk of damage to the product, associated equipment, process or surroundings, comments appear supported by the word 'Caution'.



ELECTRIC SHOCK

Where there is a risk of electric shock, comments appear supported by the hazardous voltage warning triangle.

Intended Use

The X-Box Ultra has been designed to provide a prompting text display and control system as part of a high quality teleprompting facility for television broadcasting.

The X-Box Ultra is intended for use by television presenters and prompter operators, installed within a TV studio environment, or on outside broadcasts (OB) when protected from weather by a suitable waterproof cover.

Electrical Connection



WARNING! Risk of electric shock. Always check cables for signs of damage. Damaged cables can cause personal injury and/or damage the equipment.



CAUTION! The products must be connected to a power supply of the same voltage (V) and current (A) as indicated on the products. Refer to the technical specifications for the products.



CAUTION! Only use the power cable specified for the products and certified for the country of use.



CAUTION! Using alternative power sources will invalidate the system EMC liability.

Basic Electrical Insulation (Class 1 equipment)



WARNING! This product is Class 1 equipment. For safe operation this equipment must be connected to a power supply that has a protective earth connection (US: ground).

Mounting and Installation



WARNING! Always ensure that all power and auxiliary communications cables are routed so that they do not present any danger to personnel. Take care when routing cables in areas where robotic equipment is in use.

Water, Moisture and Dust



WARNING! Protect the product from water, moisture and dust. The presence of electricity near water can be dangerous.



WARNING! When using this product outside, protect from rain using a suitable waterproof cover.

Ventilation



WARNING! Slots and openings are intended for ventilation purposes to ensure reliable operation of the product, and protect it from overheating. Do not block or cover any slots and openings.

Operating Environment



CAUTION! The product should not be used outside the operating temperature limits. Refer to the product technical specifications for the operating limits for the product.

Cleaning



WARNING! Risk of electric shock. Always disconnect and isolate the product from the power supply before cleaning.



CAUTION! Do not use solvent or oil-based cleaners, abrasives or wire brushes.

Maintenance



WARNING! Servicing or repair of this product must only be performed by qualified and trained electrical engineers.



WARNING! The fitting of non-approved parts and accessories, or the carrying out of non-approved alterations or servicing can be dangerous and could affect the safety of the product. It may also invalidate the terms and conditions of the product warranty.

About this Guide

This guide describes the installation of the X-Box Ultra as part of a full prompting system, using the range of compatible equipment and connecting cables available for various configurations.

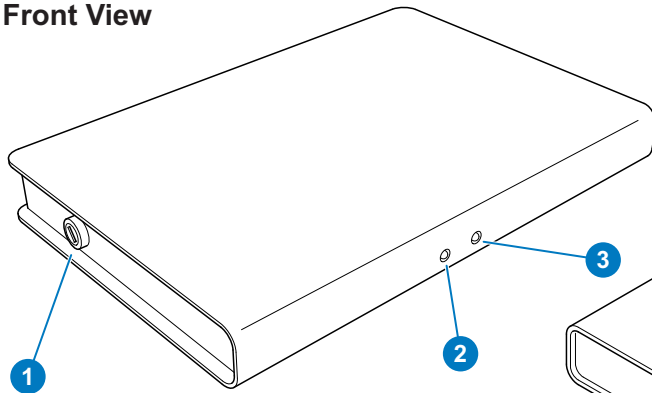
The full range of X-Box Ultra variants covered in this guide consists of the following products:

Part No.	Description
WP-NXU	WinPlus News software package, including the standard X-Box Ultra.
WP-NXU-SDI	WinPlus News software package, including the X-Box Ultra SDI.
WP-SXU	WinPlus Studio software package, including the standard X-Box Ultra.
WP-SXU-SDI	WinPlus Studio software package, including the X-Box Ultra SDI.

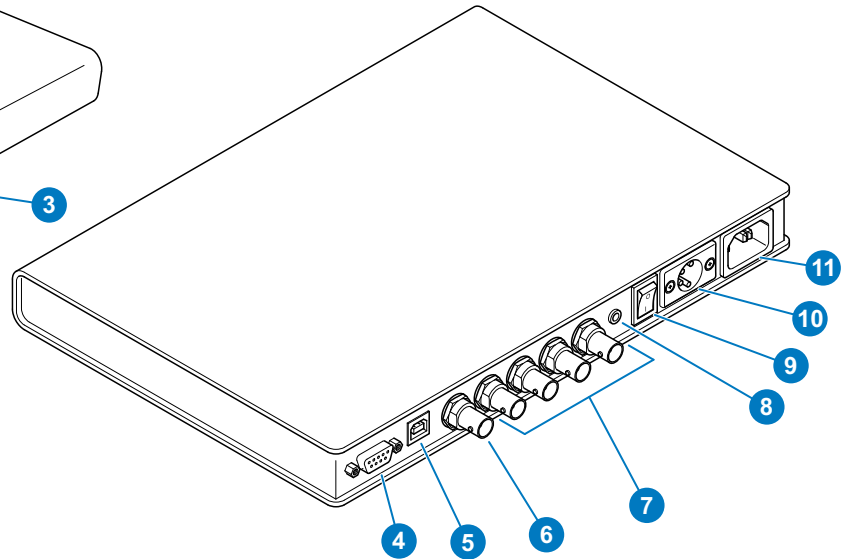
For more information on the installation and operation of the WinPlus software, refer to the WinPlus user guide.

Components and Connections

Front View



Rear View

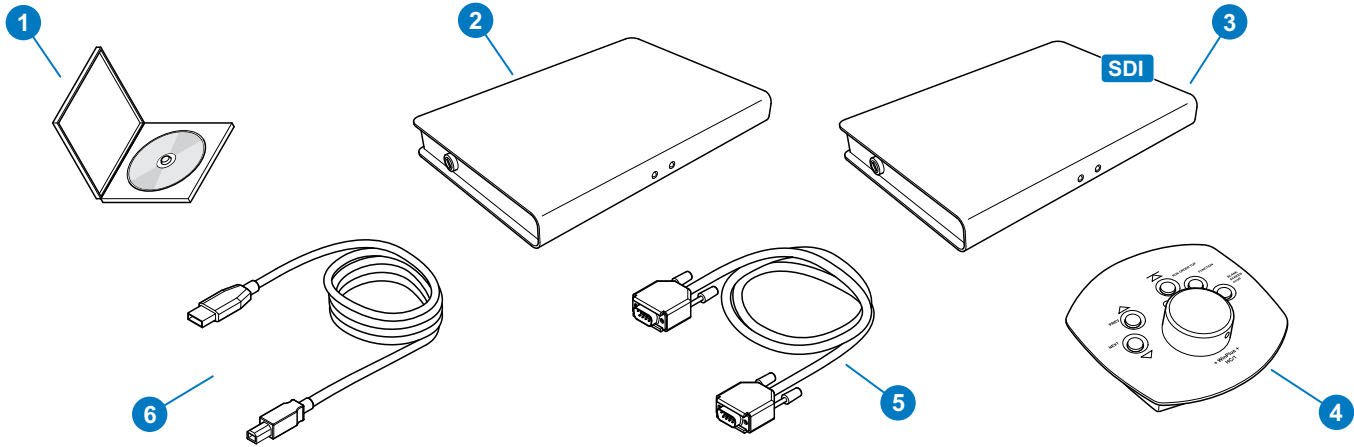


1	Fuse holder
2	AC power indicator LED
3	DC power indicator LED
4	Serial socket
5	USB socket
6	ControlNet/Genlock input

7	Composite video/SDI* output sockets
8	DC power out socket
9	Power switch
10	DC power in socket
11	AC power in socket

*Optional X-Box Ultra SDI version only.

Box Contents - All Variants



No.	Part	Description	WP-NXU	WP-NXU-SDI	WP-SXU	WP-SXU-SDI
1	A5000-5937	WinPlus software CD	✓	✓	✓	✓
2	XBOXULTRA or XBOXULTRA-S	X-Box Ultra with news software license X-Box Ultra with studio software license	✓		✓	
3	XBOXULTRA-SDI or XBOXULTRA-S-SDI	X-Box Ultra SDI with news software license X-Box Ultra SDI with studio software license		✓		✓
4	HC-1	5 button optical desktop hand controller	✓	✓	✓	✓
5	SRL-C	9-pin 'D' serial connecting cable	✓	✓	✓	✓
6	USB-C	USB connecting cable	✓	✓	✓	✓

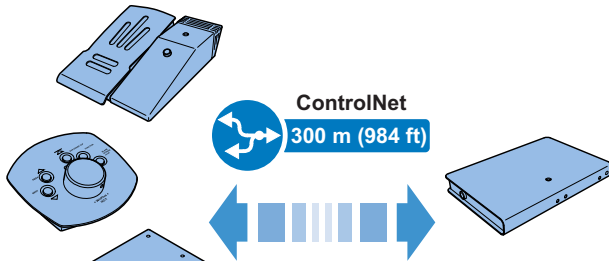
Installation

X-Box Ultra Data and Video Connections

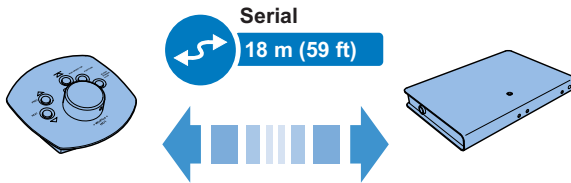
Connection Options

Special consideration should be given when choosing locations and connecting methods to install and use the X-Box Ultra.

- Using ControlNet connections, the cables can be up to 300 metres in length.



- Serial connections are used for short connection distances, with a maximum cable length of 18 metres.

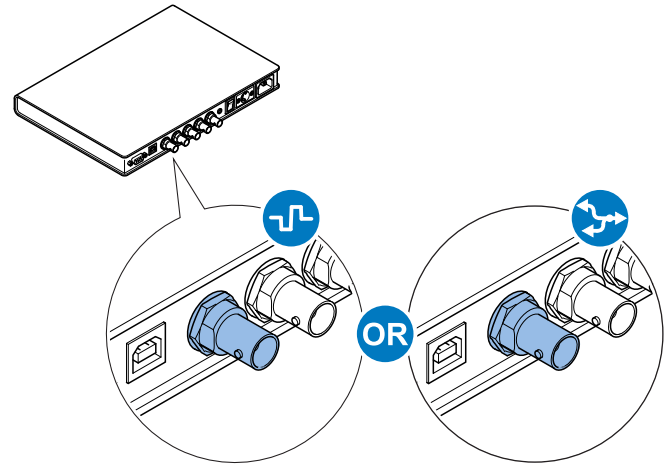


Genlock or ControlNet Connections



Genlock or ControlNet connections should always be made with screened 75Ω coaxial cable. The cable screen should be connected to earth (ground) at both ends.

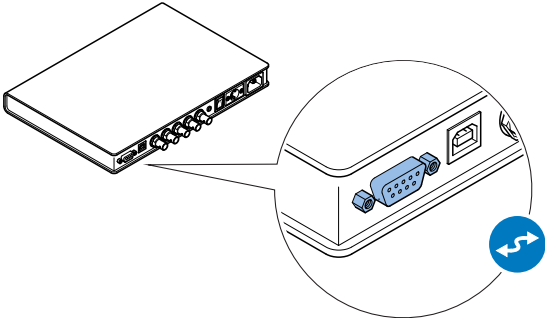
The Genlock and ControlNet input is a shared connection. This input is auto-sensing and changes function automatically with no additional configuration requirements.



It is not possible to connect Genlock and ControlNet connections to the X-Box Ultra at the same time.

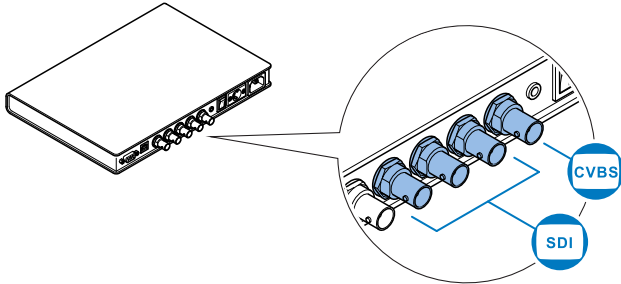
Serial Connection

Single controllers or a smart combiner box can be connected using a serial connection. The serial connection also provides power to a controller (hand or foot).



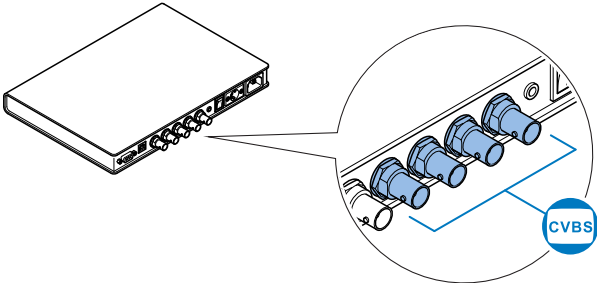
Video Connections - X-Box Ultra SDI

On the optional X-Box Ultra SDI, three SDI outputs and one composite video output are available to connect to prompter monitors.



Video Connections - X-Box Ultra

Four composite video outputs are available to connect to prompter monitors.



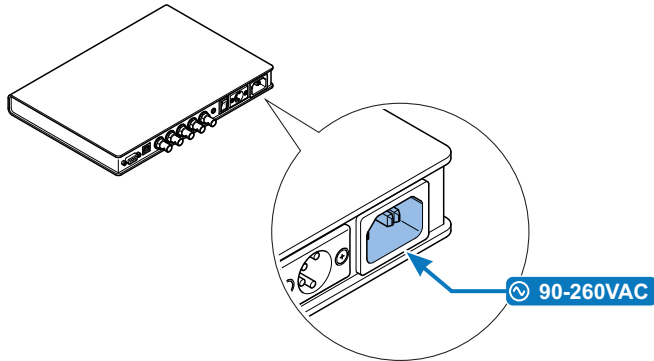
Installation

X-Box Ultra Power Connections

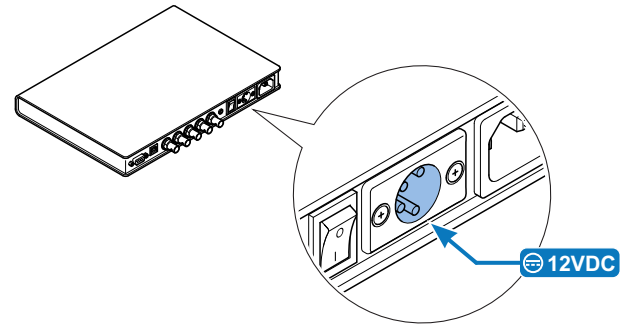
The X-Box Ultra can be powered using either an AC or DC power source, depending on the requirements of the installation. The provision of a DC power input means that the X-Box Ultra can be powered by a suitable battery source when used on outside broadcasts.

The X-Box Ultra also has a DC power out power socket to power auxiliary devices.

AC Power In Connection



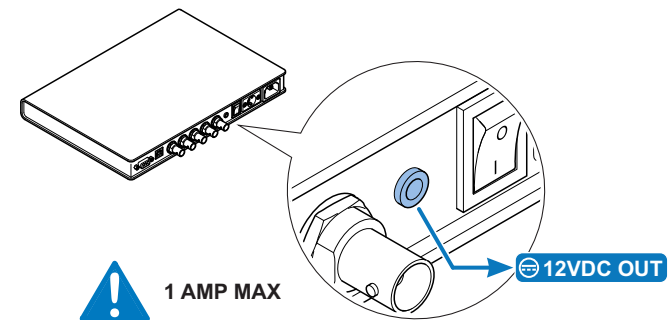
DC Power In Connection



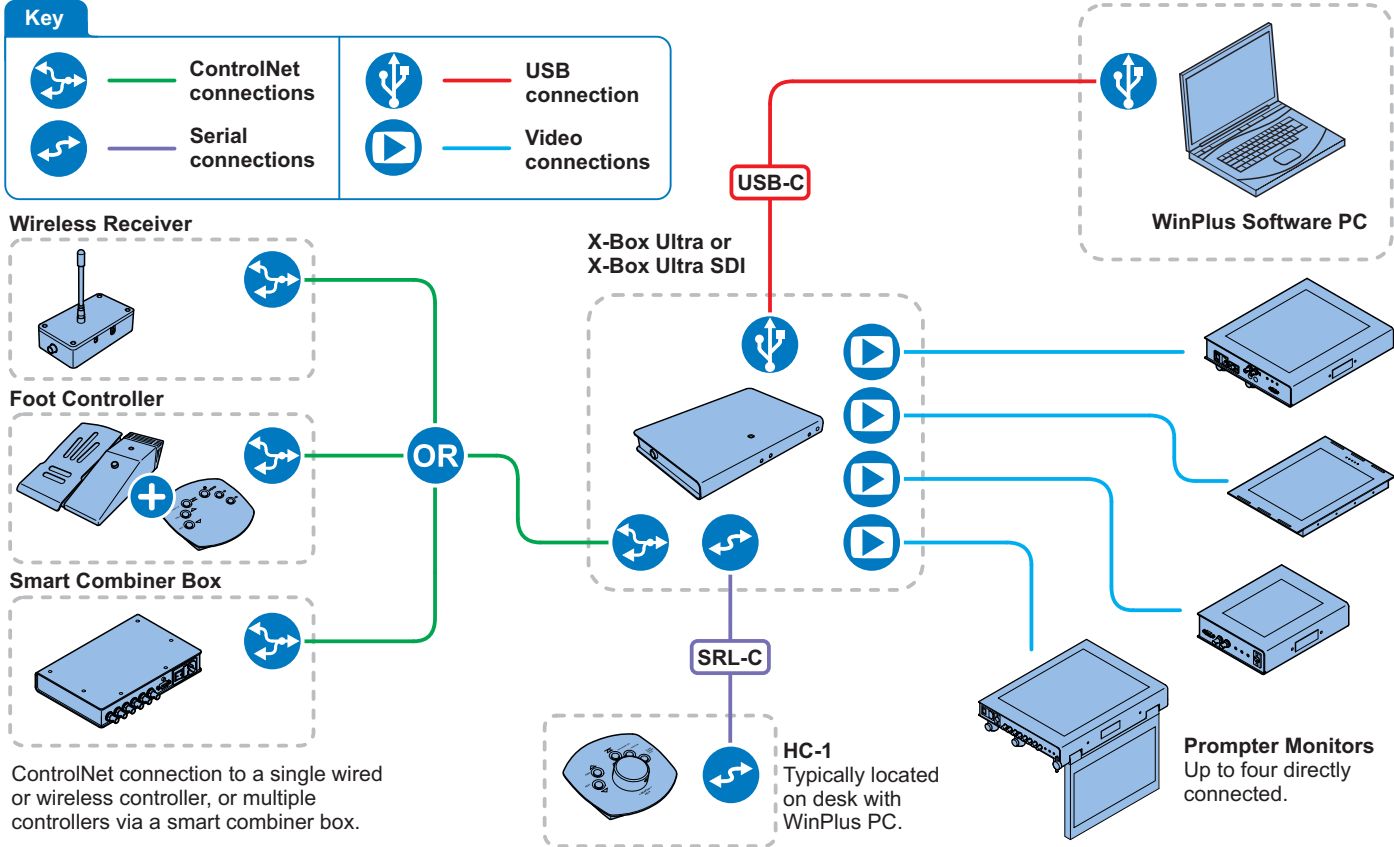
DC Power Out Connection



CAUTION! Do not exceed the current output limit of 1A when powering auxiliary devices from the DC power out socket.



X-Box Ultra System Connections - Typical Installation



Installation

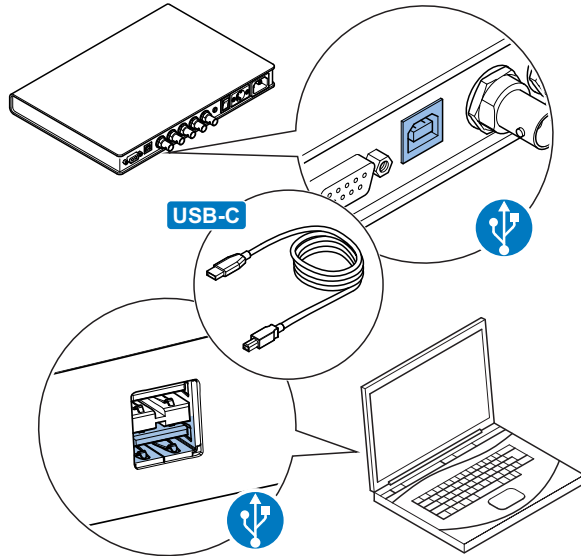
Connecting and Installing on a Host PC

The X-Box Ultra is connected by USB to a host PC running WinPlus. It must be installed as USB hardware on the PC to function.

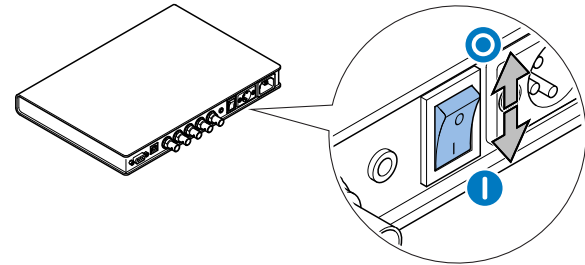
Before Installing the X-box Ultra on the host PC, run the setup program **uau99XX.exe** from the CD supplied. The default install path for the X-Box Ultra is **C:\Program Files\Pciwplus32U**.

Connecting and Powering the X-Box Ultra

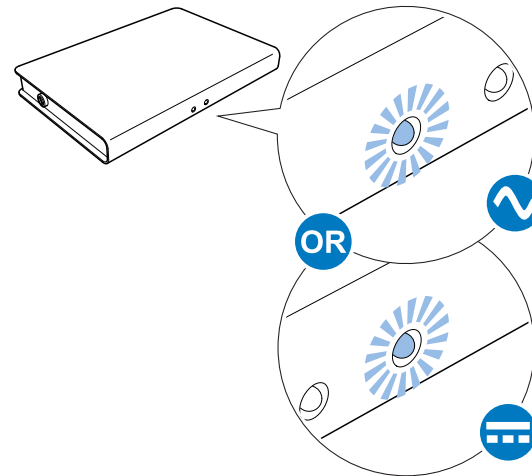
1. Using the USB cable provided, connect the X-Box Ultra to the host PC running WinPlus.



2. Switch the X-Box Ultra on using the power switch.



3. The power source (AC or DC) is indicated by the two LEDs on the front of the X-Box Ultra.

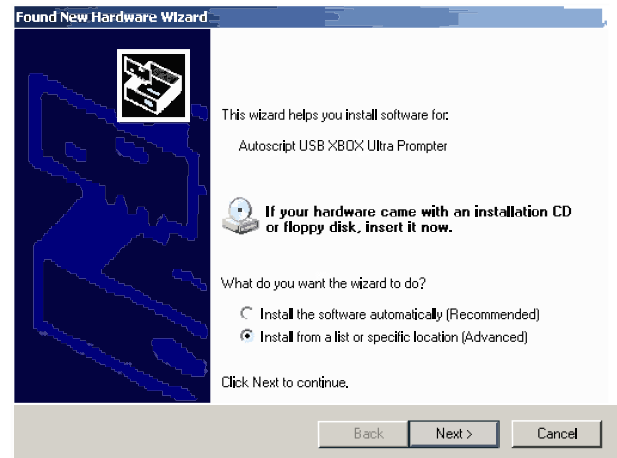


- The host PC will detect the X-Box Ultra and launch the Found New Hardware Wizard.



- The Wizard will prompt to connect to Windows Update to find the appropriate software for the X-Box Ultra:
 - Click to select **No, not this time**.
 - Click the **Next** button to continue.

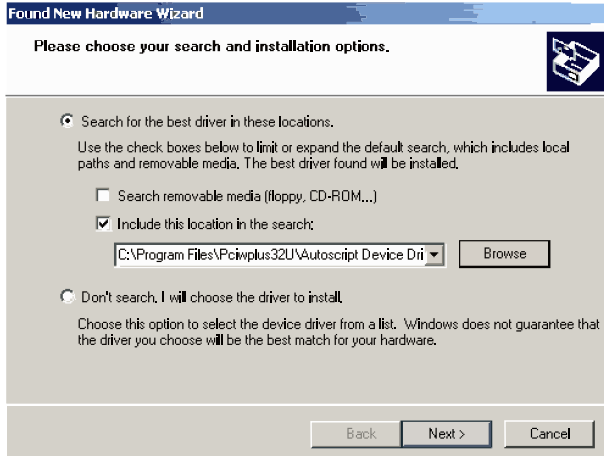
- In the next window click to select **Install from a list or specific location (Advanced)**.



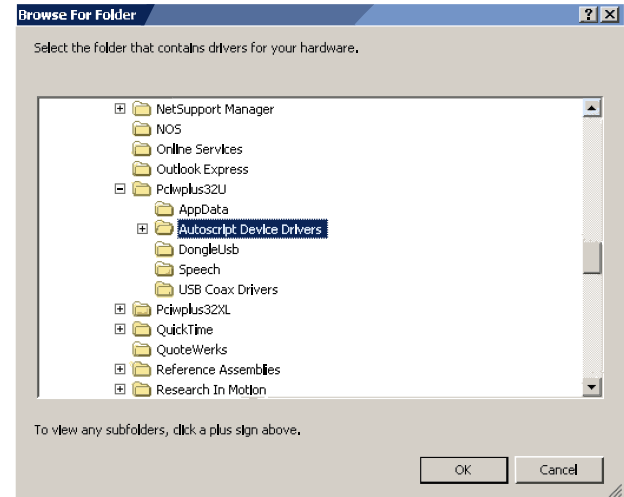
- Click the **Next** button to continue.

Installation

8. In the search and installation options window:
 - a) Click to unselect **Search removable media**.
 - b) Click to select **Include this location in the search**.
 - c) Click the **Browse** button.



9. The **Browse For Folder** window opens.



10. Navigate to **C:\Program Files\Pciwplus32U\Autoscript Device Drivers**.
11. Click **OK**.
12. The Wizard will now copy and install the driver files.

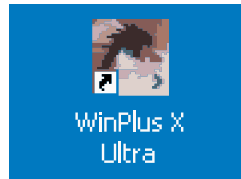
13. The Hardware Update Wizard displays the following message when installation is successful.



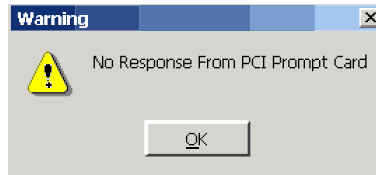
14. Click the **Finish** button to exit the Wizard.

X-Box Ultra Setup and Registration for WinPlus

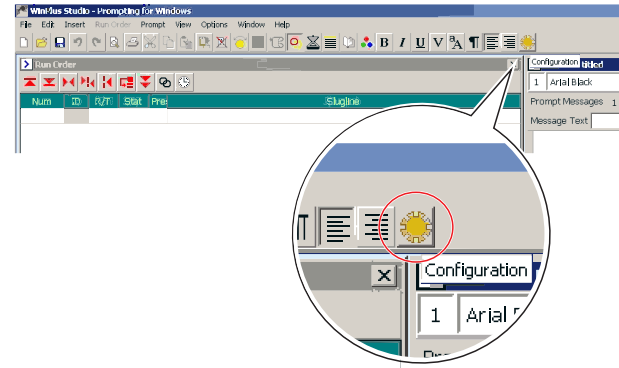
1. Launch the WinPlus application by clicking on the WinPlus X Ultra icon on the host PC desktop.



2. WinPlus as default will look for an Internal PCI card. The first time the application is launched a warning window will pop up.

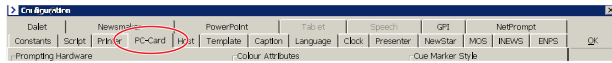


3. Click the **Ok** button to clear the warning message.
4. Click to select the **Configuration** icon on the far right of the toolbar (yellow gearwheel icon).



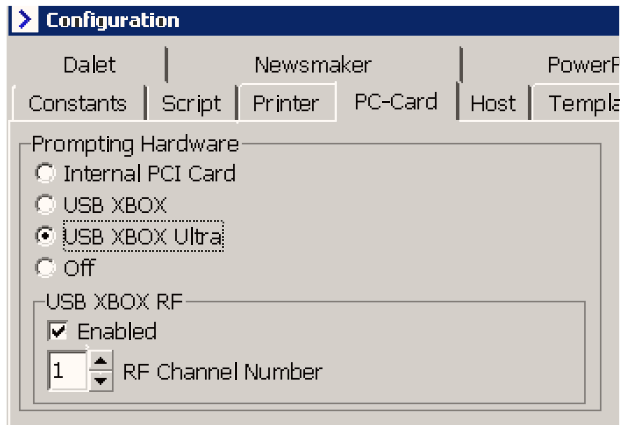
Installation

5. In the **Configuration** window click to select the **PC-Card** tab.

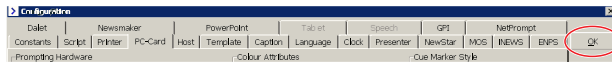


6. In this tab under the **Prompting Hardware** options:

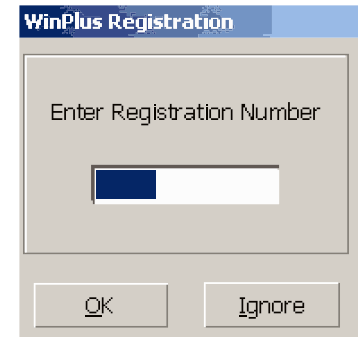
- a) Select **USB X-Box Ultra**.



7. Click the OK button to exit.



8. WinPlus communicates with the X-Box Ultra to confirm the registration number. The **WinPlus Registration** window opens.



9. Enter the X-Box Ultra registration number. This number can be found on a sticker on the CD case that shipped with WinPlus. It is an eight digit number which is unique to each X-Box Ultra.
10. Click the OK button.



The registration number is also located on a sticker on the underside of the X-Box Ultra.

Routine Maintenance

The X-Box Ultra requires minimal routine maintenance, apart from checking the connections and overall operation periodically.

Routine checks

During use, check the following:

- Check cables for signs of wear or damage. Replace as necessary.
- Check that all cables are connected properly.

Cleaning



WARNING! Risk of electric shock. Disconnect and isolate the product from the power supply before cleaning.

During normal use the only cleaning required should be a regular wipe over with a dry, lint-free cloth. Dirt accumulated during storage or periods of disuse may be removed with a vacuum cleaner. Particular attention should be paid to all connection ports on the X-Box Ultra.

Changing the Fuse

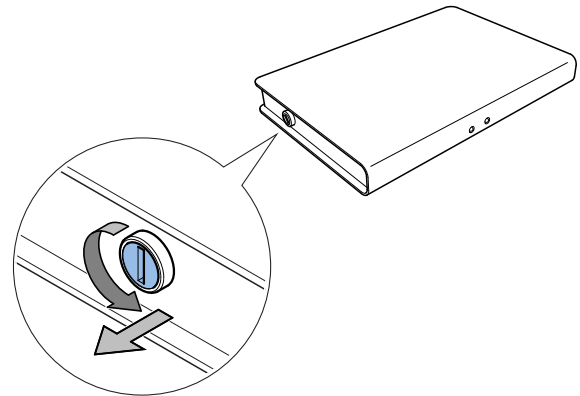


WARNING! Risk of electric shock. Disconnect the power cable. Fuses must only be changed by a trained and competent person.



CAUTION! The replacement fuse must be the correct rating: Type 20mm ceramic tube fuse rated at 0.5A 250V AC.

1. Switch OFF and disconnect the power cable.
2. Using a flat-blade screwdriver, remove the fuse holder and discard the blown fuse.



3. Replace the fuse, then reinstall the fuse holder.

Troubleshooting

Fault	Check	Comments
The X-Box Ultra is not powering up.	Check that the AC or DC power source is connected and secured.	See the section X-Box Ultra Power Connections on page 8.
	Check and if necessary replace the fuse.	See the section Changing the Fuse on page 15.
The X-Box Ultra is powered up, but not controlling the prompted text.	Check that any ControlNet and serial system connections to controllers are correct and secured.	See the sections X-Box Ultra Data and Video Connections on page 6.
The prompter monitor is not displaying text.	Check that video connections are correct and secured.	See the sections X-Box Ultra Data and Video Connections on page 6.
	Ensure that quality screened cables have been used for the video signal and that the screen is earthed at both ends.	
	If optional SDI outputs are being used, ensure that the cable is connected to an SDI input on the prompter monitor.	Refer to the prompter monitor user guide.

Technical Specification

Physical Data

Width	180 mm (7.1 in.)
Length	260 mm (10.2 in.)
Depth	31 mm (1.2 in.)
Weight	.1 Kg (2.2 lb)

*Excluding controls and connectors.

Environmental Data

Operating temperature range	+5°C to +40°C (+41°F to +104°F)
Storage temperature range	-20°C to +60°C (-4°F to +140°F)

Electrical Data

AC power input	90-260V AC
DC power input	12V DC
DC power output	12V DC, 1A
AC power consumption	0.1A
DC power consumption	1A

Connections Data

DC Power In Socket

Connector type: 4 pin XLR plug.

Pin	Signal
1	GROUND
4	+12V DC

DC Power Out Socket

Connector type: 3.5 mm mono jack socket.

Pin	Signal
Tip	+12V DC
Sleeve	GROUND

Serial Connection

Connector type: 9-way D socket.t

Pin	Signal
1	TX
5	GROUND
8	RX
9	+12 VDC

Data format is standard RS232 voltage levels, 8 data, 1 stop, no parity, 2400 baud.

ControlNet Connection

Connector type: BNC Connector.

Pin	Signal
Tip	Data
Sleeve	Ground

USB Connection

Conforms to USB 2.0 standard.

Video Out Sockets

Connector type: 75Ω BNC socket.

Pin	Signal
Centre	Composite Video In (PAL or NTSC)
Outer	GROUND (Cable screen)

Technical specifications are subject to change without notice.

General Notices

FCC Certification



FCC Notice

This product complies with the limits for a Class A digital device, pursuant to Part 15 of the FCC Rules. These limits are designed to provide reasonable protection against harmful interference in a commercial environment. This equipment generates, uses and can radiate radio frequency energy and, if not installed and used in accordance with the instructions, may cause harmful interference with radio communications. Operation of this product in a residential area is likely to cause harmful interference, in which case you will be required to correct the interference at your own expense.

FCC Warning

Changes or modifications not expressly approved by the party responsible for compliance could void the user's authority to operate the equipment.

FCC Declaration of Conformity

This product complies with Part 15 of the FCC Rules. Operation is subject to the following two conditions:

1. This product may not cause harmful interference.
2. This product must accept any interference received, including interference that may cause undesired operations.

Declaration of Conformity



Vitec Videocom Limited declares that this product has been manufactured in accordance with BS EN ISO 9001:2008.

This product complies with the following EU Directives:

- Low Voltage Directive 2006/95/EC
- EMC Directive 2004/108/EC

Compliance with these directives implies conformity to applicable harmonized European standards (European Norms) which are listed on the EU Declaration of Conformity for this product or product family. A copy of the Declaration of Conformity is available upon request.

Environmental considerations

ROHS Compliance Statement

Vitec Videocom Limited is compliant with the European Union Directive 2002/95/EC Restrictions of Hazardous Substances (RoHS) that restricts the use of hazardous substances in Electrical and Electronic Equipment.

European Union Waste of Electrical and Electronic Equipment (WEEE) Directive (2002/96/EC)



This symbol marked on the product or its packaging indicates that this product must not be disposed of with general household waste. In some countries or European Community regions separate collection systems have been set up to handle the recycling of electrical and electronic waste products. By ensuring this product is disposed of correctly, you will help prevent potentially negative consequences for the environment and human health. The recycling of materials helps conserve natural resources.

Visit our website for information on how to safely dispose of this product and its packaging.

In countries outside the EU:

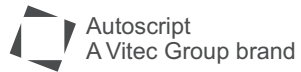
Dispose of this product at a collection point for the recycling of electrical and electronic equipment according to your local government regulations.

Pollution statement

This equipment is designed for operation in Pollution Degree 2 environments.



Publication part No. XBOXULTRA-4980/1



www.autoscript.tv