

# User Guide



Foot Controller FC-IP

## Foot Controller FC-IP



EN



Part No. A9009-0003

[www.autoscript.tv](http://www.autoscript.tv)



Copyright © 2018

All rights reserved.

## **Original Instructions: English**

All rights reserved throughout the world. No part of this publication may be stored in a retrieval system, transmitted, copied or reproduced in any way, including, but not limited to, photocopy, photograph, magnetic or other record without the prior agreement and permission in writing of the Vitec Group Plc.

## **Disclaimer**

The information contained in this publication is believed to be correct at the time of printing. Vitec Production Solutions Ltd reserves the right to make changes to the information or specifications without obligation to notify any person of such revision or changes. Changes will be incorporated in new versions of the publication.

We are making every effort to ensure that our publications are updated on a regular basis to reflect changes to product specifications and features. Should this publication not contain information on the core functionality of your product, please let us know. You may be able to access the latest revision of this publication from our website.

Vitec Production Solutions Ltd reserves the right to make changes to product design and functionality without notification.

## **Trademarks**

All product trademarks and registered trademarks are the property of The Vitec Group Plc.

All other trademarks and registered trademarks are the property of their respective companies.

## **Published by:**

Vitec Production Solutions Ltd

Email: [technical.publications@vitecgroup.com](mailto:technical.publications@vitecgroup.com)



<b>Safety</b> .....	<b>2</b>	Routine Maintenance .....	9
Electrical Connection .....	2	Routine checks .....	9
Mounting and Installation .....	3	Cleaning .....	9
Water, Moisture and Dust .....	3	<b>Technical Specification</b> .....	<b>10</b>
Operating Environment .....	3	<b>Troubleshooting</b> .....	<b>11</b>
Maintenance .....	3	<b>General Notices</b> .....	<b>13</b>
<b>Components and Connections</b> .....	<b>4</b>		
Top View .....	4		
Front View .....	5		
Box Contents .....	6		
<b>Installation</b> .....	<b>7</b>		
Powering Up .....	7		
<b>Operation</b> .....	<b>8</b>		

## Safety

**Important information on the safe installation and operation of this product. Read this information before operating the product. For your personal safety, read these instructions. Do not operate the product if you do not understand how to use it safely. Save these instructions for future reference.**

### Warning Symbols Used in these Instructions

Safety cautions are included in these instructions. These safety instructions must be followed to avoid possible personal injury and avoid possible damage to the product.



**WARNING!** Where there is a risk of personal injury or injury to others, comments appear supported by the warning triangle symbol. Where there is a risk of damage to the product, associated equipment, process or surroundings, comments appear supported by the word '**CAUTION**'.

### Electrical Connection



**WARNING!** Always disconnect and isolate the product from the power supply before attempting any servicing or removing the covers.



**CAUTION!** The products must be connected to a power supply of the same voltage (V) and current (A) as indicated on the product. Refer to the technical specifications for the products



## Mounting and Installation



**WARNING!** Always ensure that all cables are routed so that they do not present any danger to personnel. Take care when routing cables in areas where robotic equipment is in use.

## Water, Moisture and Dust



**WARNING!** Protect the product from water, moisture and dust. The presence of electricity near water can be dangerous.



**WARNING!** When using this product outside, protect from rain using a suitable waterproof cover.

## Operating Environment



**CAUTION!** The product should not be used outside the operating temperature limits. Refer to the product technical specifications for the operating limits for the product.

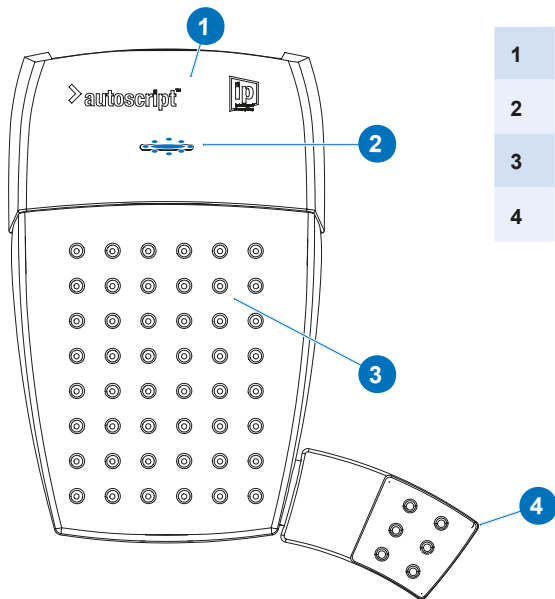
## Maintenance



**WARNING!** Servicing or repair of this product must only be performed by qualified and trained engineers.

# Components and Connections

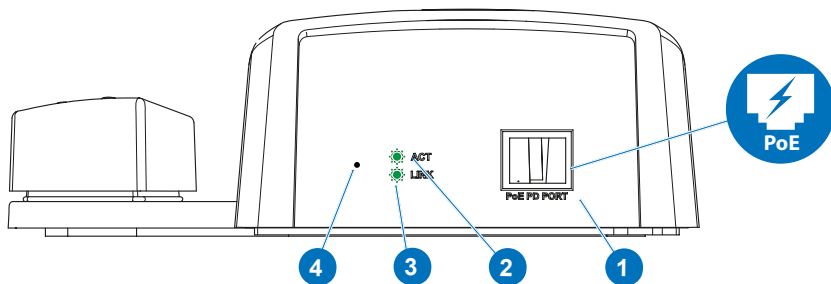
## Top View



1	Foot Control
2	Status LED
3	Pedal
4	Button



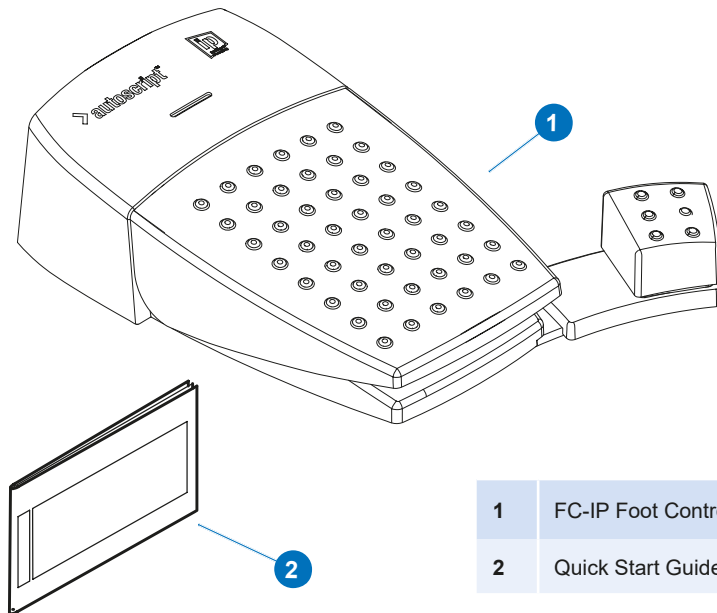
## Front View



1	RJ45. Powered over Ethernet Requires 3rd party PoE injector or XBox-IP (not included)
2	Data LED
3	Link LED
4	Factory Reset

# Components and Connections

## Box Contents



1 FC-IP Foot Controller

2 Quick Start Guide



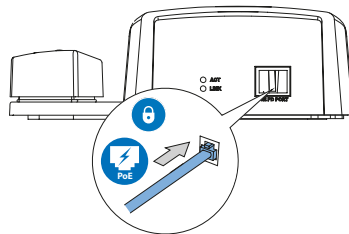
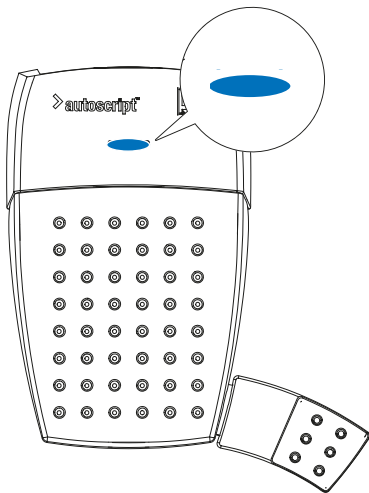


## Powering Up

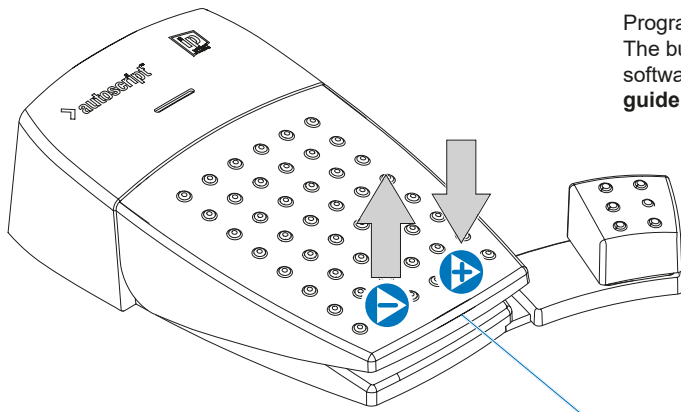
The controller is automatically powered up when the PoE Ethernet cable Cat5 or Cat6 cable is attached.



Requires 3rd party PoE injector or Xbox-IP (A9009-0001 not included)



Status LED	
	Status LED and programmable function buttons flash once: <b>Powered on.</b>
	Flashing Blue light: <b>Connected to the network but not the application.</b>
	Solid Blue light: <b>Connected to the network and the application.</b>
	Solid Red light: <b>Connected to the network, the application and in use.</b>



Programmable function button.  
The button is set up in the WP-IP  
software. See **WP-IP software  
guide A9009-4983**.

Press the pedal down to start the scroll, the further it is pressed down the faster the scroll will operate. Sensitivity and dead-band range of the Foot Control can be adjusted in the Device Configuration in WP-IP

NB. The pedal can act as a function button. A single quick push of the pedal through its whole range and back will activate the assigned function. As a default the assigned function is the “Toggle Direction” function.



## Routine Maintenance

The FC-IP Foot Controller requires minimal routine maintenance, apart from checking the connections and overall operation periodically.

### Routine checks

During use, check the following:

- Check PoE Ethernet cable for signs of wear or damage. Replace as necessary.
- Check the PoE Ethernet cable is connected properly.
- Check the Buttons and scroll wheel all move freely.

### Cleaning

During normal use the only cleaning required should be a regular wipe over with a dry, lint-free cloth. Dirt accumulated during storage or periods of disuse may be removed with a vacuum cleaner. Particular attention should be paid to the connection port.



**WARNING!** Disconnect and isolate the product from the power supply before cleaning.

---

# Technical Specification

## Physical Data

	FC-IP
<b>Width*</b>	195 mm (7.6 in)
<b>Length*</b>	232 mm (9.13 in)
<b>Height*</b>	63 mm (2.4 in)
<b>Weight</b>	950 g (2.1 lb)

## Programmable Function Buttons x 2

- 1 x Pedal
- 1 x Button

## Connector

- 1 x RJ45

## Power

- 3 W Max.
- Powered over Ethernet (PoE)
- Third party PoE Injector Required or Xbox-IP (not included)

## Status LED's

- Connection
- Data
- Link
- Status

## Environmental Data

- Operating temperature range  
+5°C to +40°C (+41°F to +104°F)
- Storage temperature range  
-20°C to +60°C (-4°F to +140°F)



Fault	Check
The FC-IP is not powering up	<p>Check that the power over Ethernet source has a suitable power injector</p> <p>Check that the cable from the PoE source is firmly locked into the PoE input on the FC-IP</p> <p>Check that a quality Cat5 or Cat6 cable has been used to connect to the PoE injector</p>
The FC-IP is powered up, but not controlling the prompted text	<p>Check that any connections to controllers are correct and secured</p> <p>Confirm that the FC-IP is enabled in the Devices window</p> <p>Check that a quality Cat5 or Cat6 cable has been used to connect the controller to the PoE injector</p>
The FC-IP has locked and is not responsive	<p>Power cycle the FC-IP by removing the PoE Injector connection</p>
The FC-IP is not discovered on a local IP network	<p>Check that the FC-IP and the software application are not separated by an IP gateway</p> <p>Check that the device is not already connected to another different network</p> <p>If added to the system manually check the correct details are entered in the Manually Add Device fields</p>
The FC-IP IP address is not configurable correctly from the application	<p>Check that the correct IP address has been added for the FC-IP. (i.e. has this IP address been used for a different device)</p>



## General Notices

### FCC Certification



### FCC Warning

Changes or modifications not expressly approved by the party responsible for compliance could void the user's authority to operate the equipment.

### FCC Declaration of Conformity

This product complies with Part 15 of the FCC Rules. Operation is subject to the following two conditions:

1. This product may not cause harmful interference.
2. This product must accept any interference received, including interference that may cause undesired operations.



### Declaration of Conformity



Vitec Production Solutions Limited declares that this product has been manufactured in accordance with BS EN ISO 9001:2008.

This product complies with the following EU Directives:

- Low Voltage Directive 2014/35/EU
- EMC Directive 2014/30/EU

Compliance with these directives implies conformity to applicable harmonised European standards (European Norms) which are listed on the EU Declaration of Conformity for this product or product family. A copy of the Declaration of Conformity is available upon request.

### Environmental considerations



#### European Union Waste of Electrical and Electronic Equipment (WEEE) Directive (2012/19/EU)

This symbol marked on the product or its packaging indicates that this product must not be disposed of with general household waste. In some countries or European Community regions separate collection systems have been set up to handle the recycling of electrical and electronic waste products. By ensuring this product is disposed of correctly, you will help prevent potentially negative consequences for the environment and human health. The recycling of materials helps conserve natural resources.

Visit our website for information on how to safely dispose of this product and its packaging.

#### In countries outside the EU:

Dispose of this product at a collection point for the recycling of electrical and electronic equipment according to your local government regulations.

Publication No. A9009-4985/A



**Autoscript**  
A Vitec Group Brand

[www.autoscript.tv](http://www.autoscript.tv)